

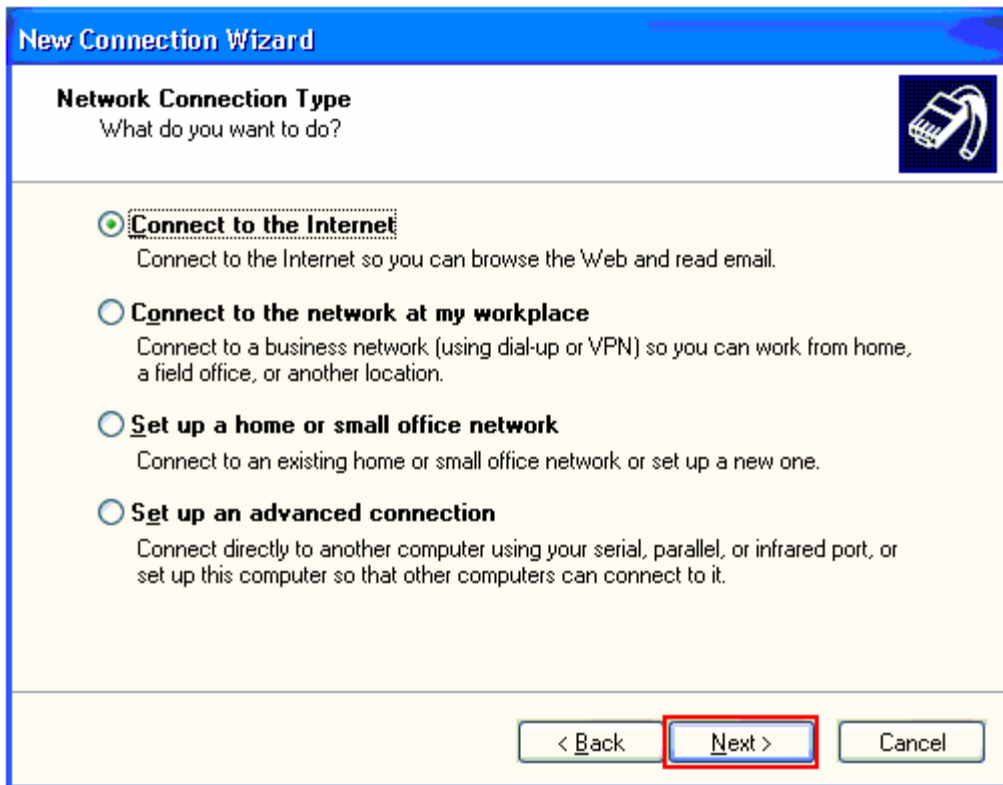


Dialup setup: Windows XP

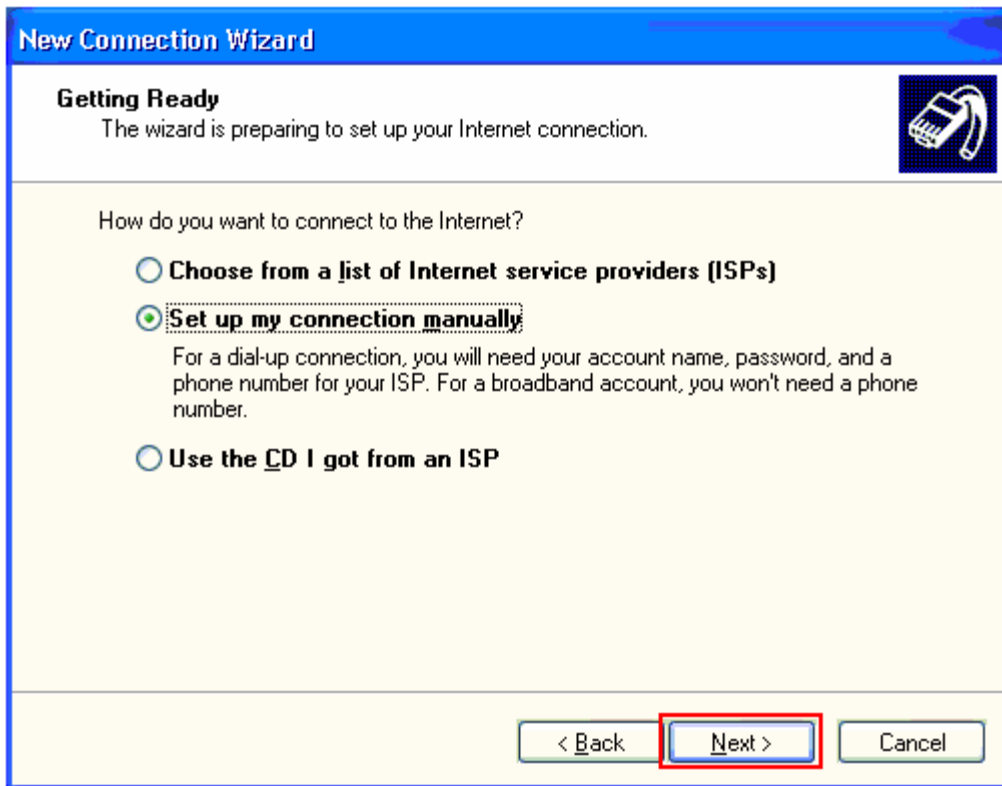
1. Go to **Start - Control Panel**
If you are in Classic View, go to **Start - Settings - Control Panel**
2. Open Network Connections
If you are in Classic View, open **Network and Internet Connections – Network Connections**.
3. Click on **Create a new connection**. Click **Next**



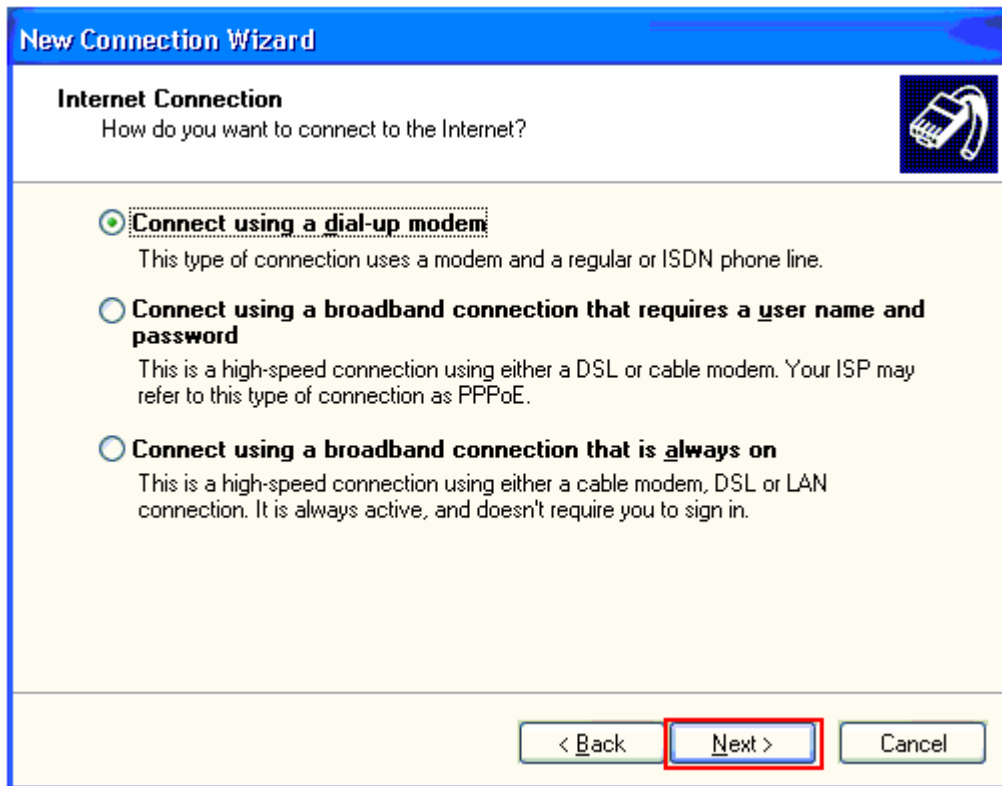
4. Click on the radio button beside **Connect to the Internet**, click **Next**



5. Click on the radio button beside **Setup up my connection manually**, click **Next**



6. Click on the radio button beside **Connect using a dial-up modem**, click **Next**



7. Enter **Netbay Internet**, click **Next**

New Connection Wizard

Connection Name 

What is the name of the service that provides your Internet connection?

Type the name of your ISP in the following box.

ISP Name

The name you type here will be the name of the connection you are creating.

< Back Next > Cancel

8. Enter **0198307006** as shown below, click **Next**, and **Next** again.

New Connection Wizard

Phone Number to Dial
What is your ISP's phone number?

Type the phone number below.

Phone number:

You might need to include a "1" or the area code, or both. If you are not sure you need the extra numbers, dial the phone number on your telephone. If you hear a modem sound, the number dialed is correct.

< Back Next > Cancel

9. Enter your Netbay account username and password as shown below, click Next

Note: Do not include @netbay.com.au at the end of your username.

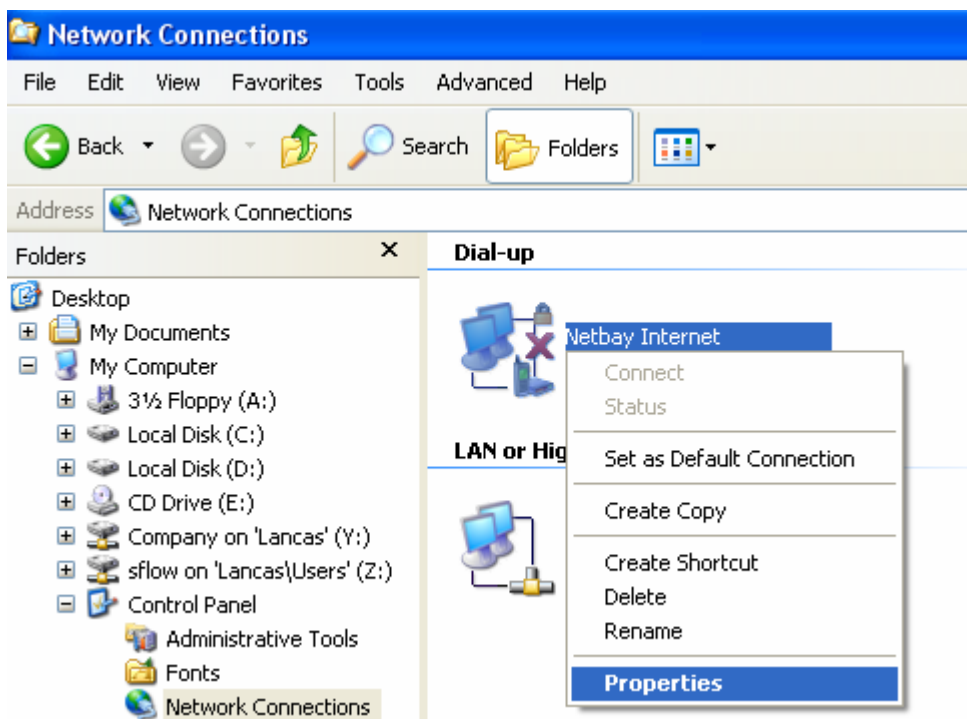


The image shows a screenshot of the 'New Connection Wizard' dialog box in Windows XP. The title bar reads 'New Connection Wizard'. The main heading is 'Internet Account Information', followed by the instruction: 'You will need an account name and password to sign in to your Internet account.' Below this, a note says: 'Type an ISP account name and password, then write down this information and store it in a safe place. (If you have forgotten an existing account name or password, contact your ISP.)' There are three input fields: 'User name:' with the text 'username', 'Password:' with seven dots, and 'Confirm password:' with seven dots. Below the fields are three checked checkboxes: 'Use this account name and password when anyone connects to the Internet from this computer', 'Make this the default Internet connection', and 'Turn on Internet Connection Firewall for this connection'. At the bottom right are three buttons: '< Back', 'Next >', and 'Cancel'.

10. Click Finish to complete the dialup setup

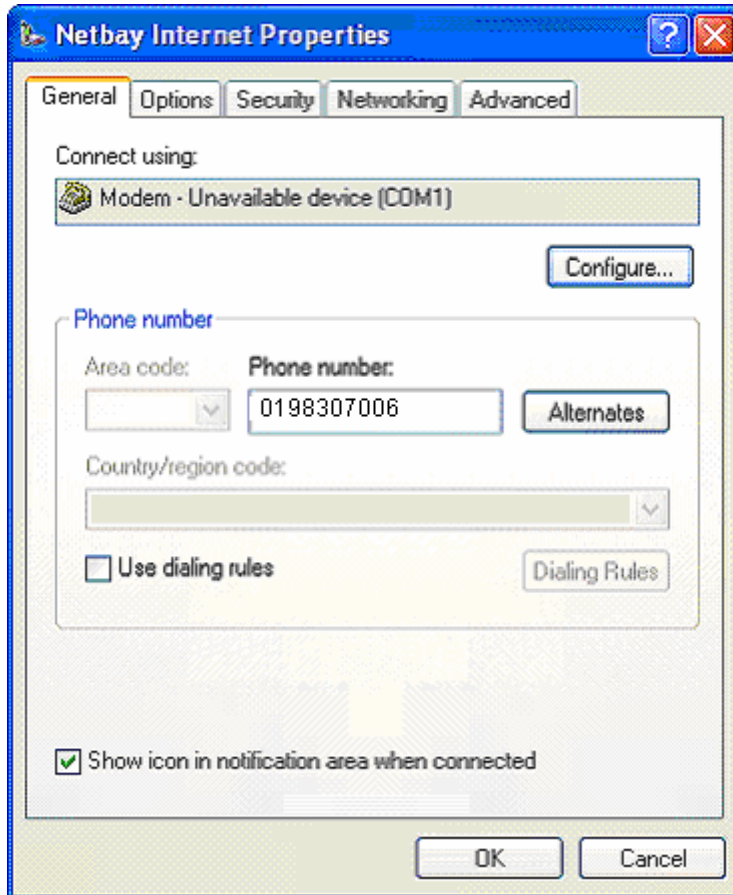


11. Right-click on the new connection, and click Properties.



12. Untick the box beside **Use dialing rules**
Tick the box beside **Show icon in notification area when connected**.

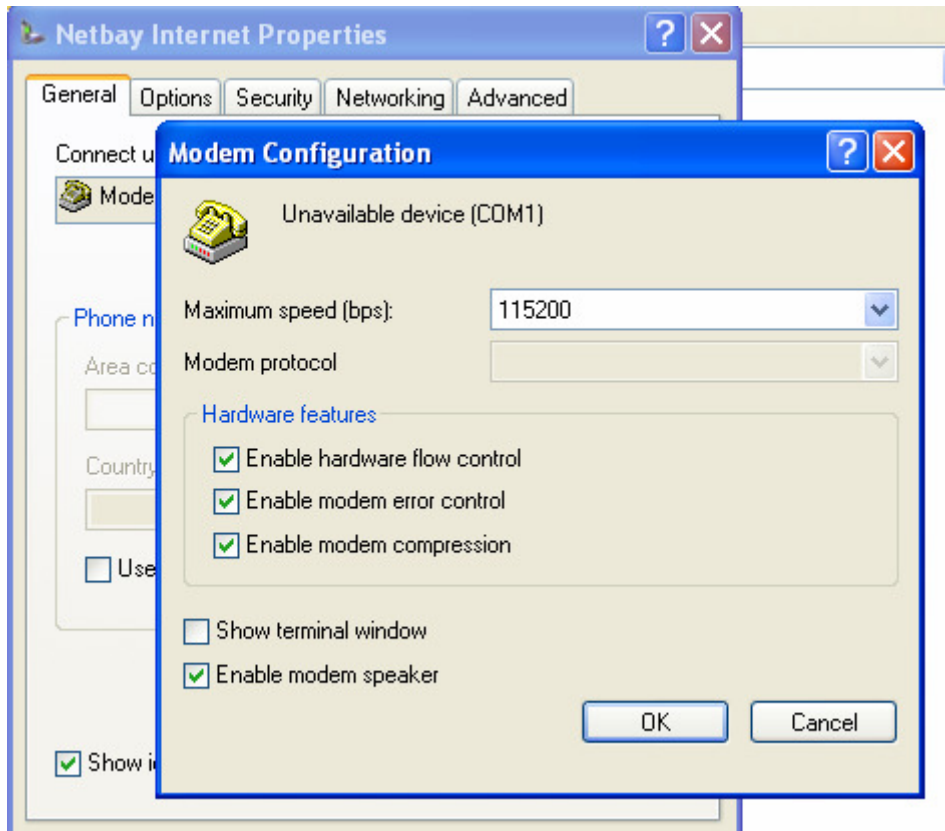
Click **Configure** when done.



13. Select **115200** in the dropdown box beside **Maximum speed (bps)**.

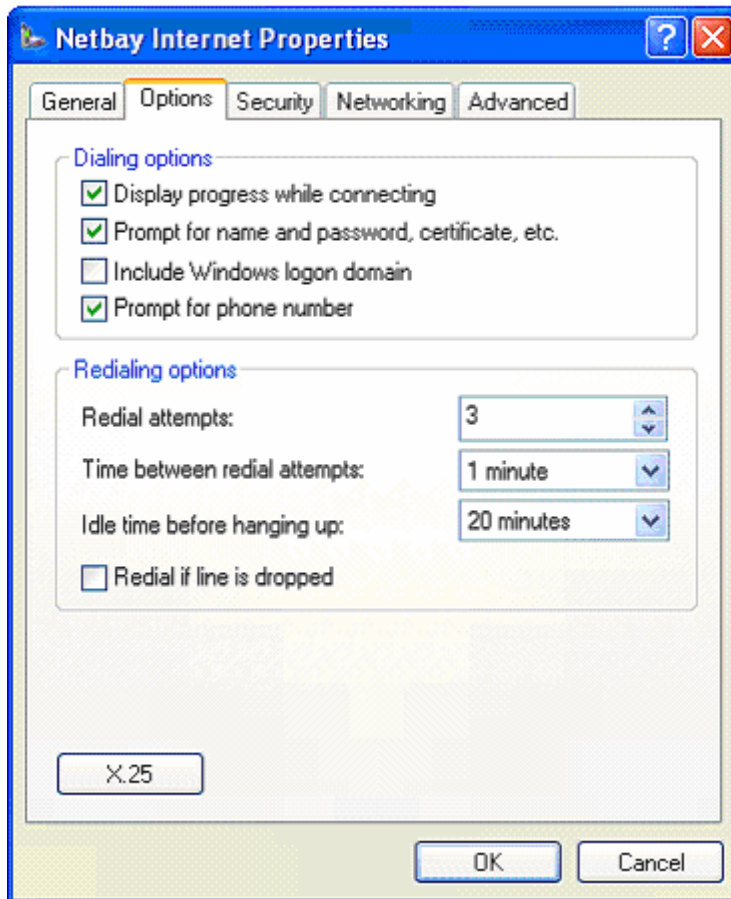
Tick boxes as shown below, and click OK.

Click on the Options tab.



14. Make sure the respective boxes are ticked/unticked as shown below.

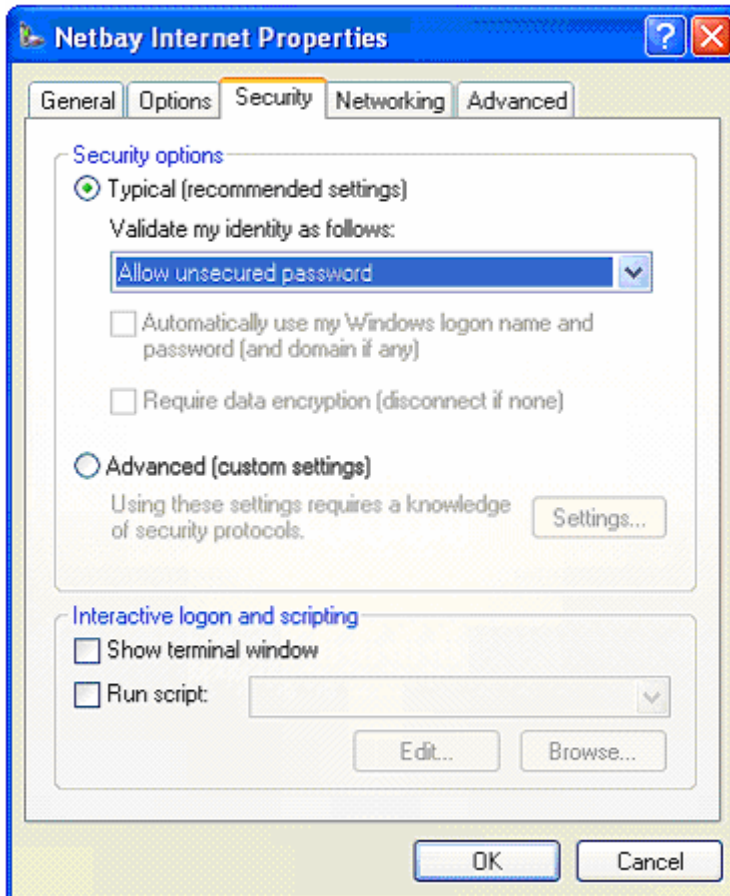
Click on the **Security** tab when done.



15. Select **Typical**, and make sure **Allow unsecured password** is selected.

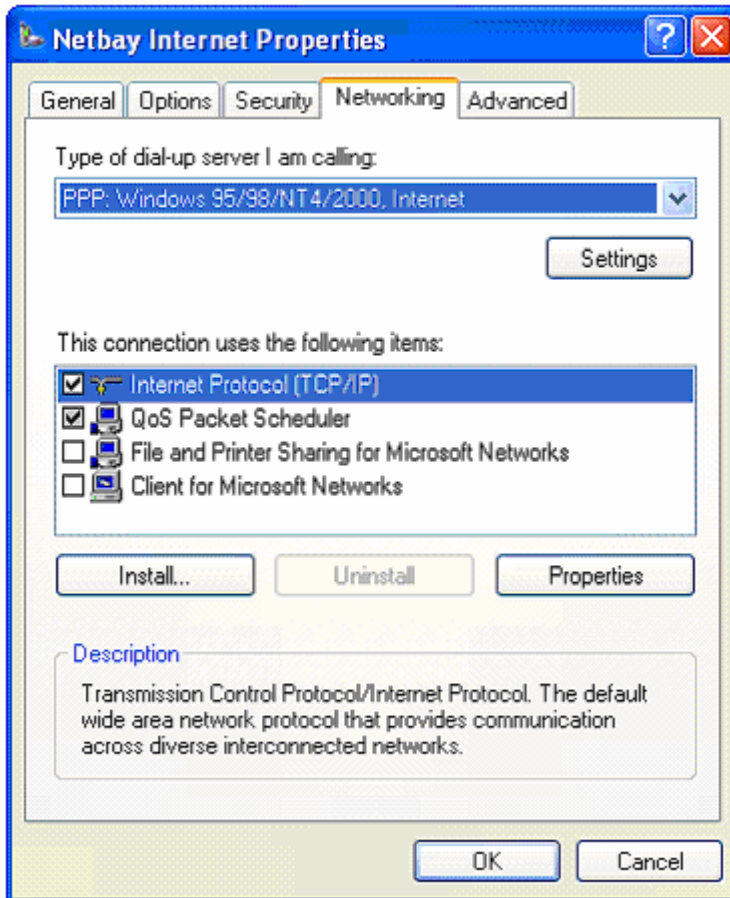
Untick **Show terminal window** and **Run script**.

Click on the **Networking** tab when done.



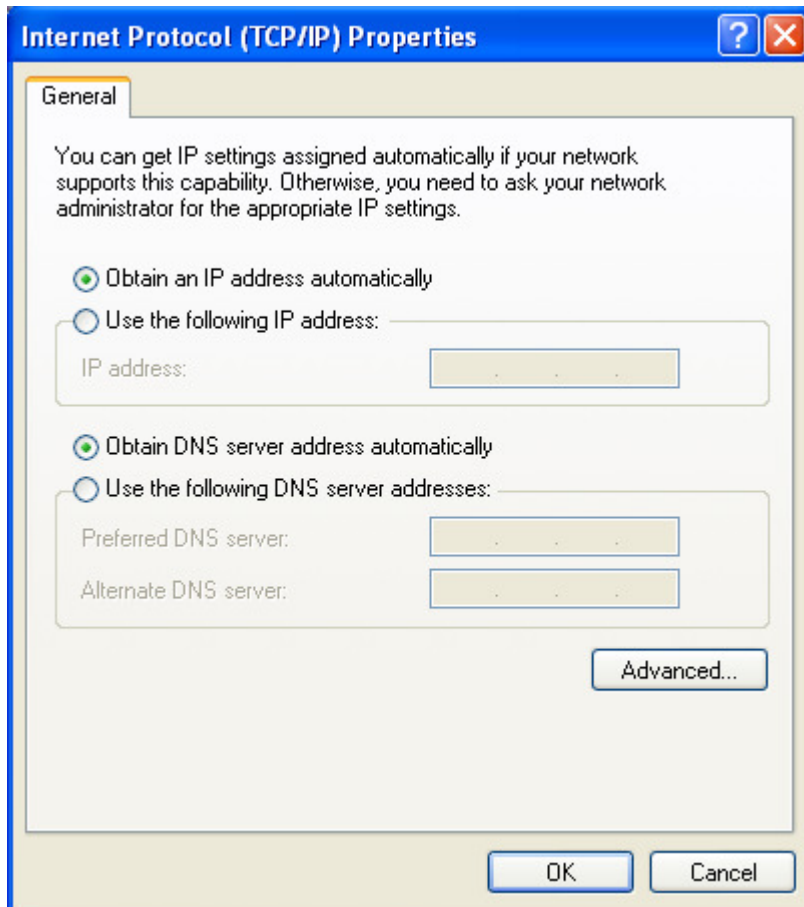
16. Make sure PPP: Windows 95/98/NT4/2000, Internet is selected.

Double click on Internet Protocol (TCP/IP) when done.

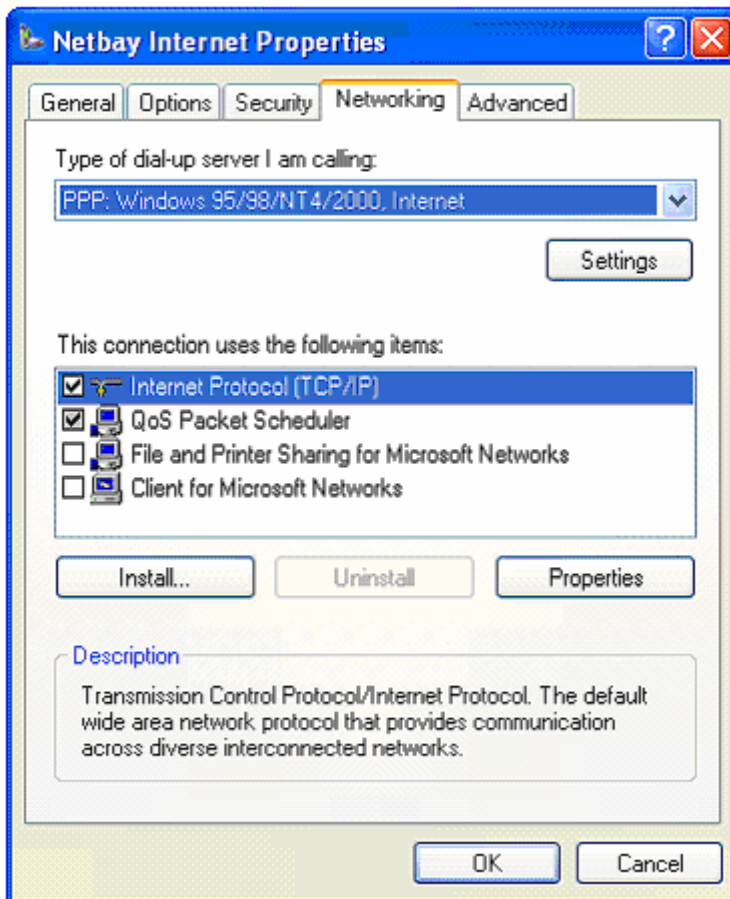


17. Make sure the settings in this window are similar to the screen capture below.

Click OK when done.



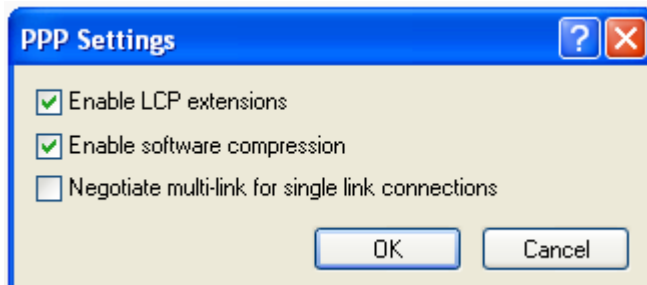
18. Click on Settings.



19. Tick **Enable LCP extensions** and **Enable software compression**.

Untick **Negotiate multi-link for single link connections**.

Click OK when done, then click on the Advanced tab next.



20. Optional setting: follow the settings display on the below screen capture.

Note that applying the below settings will change the way other computers are able to access your computer. We recommend that you leave the default settings unchanged.

Click on OK when done.

