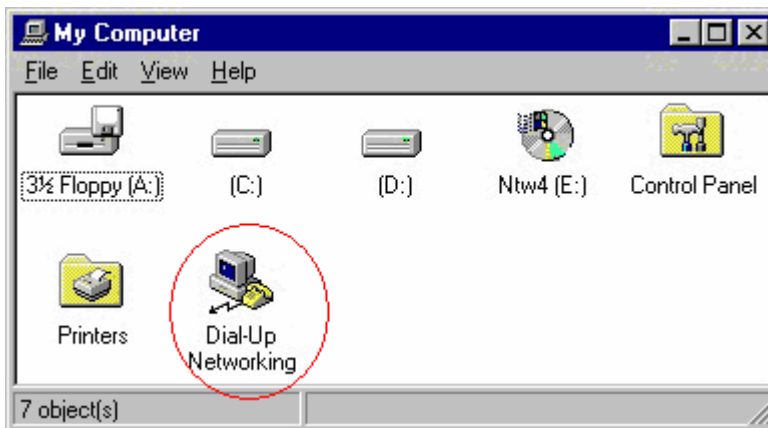


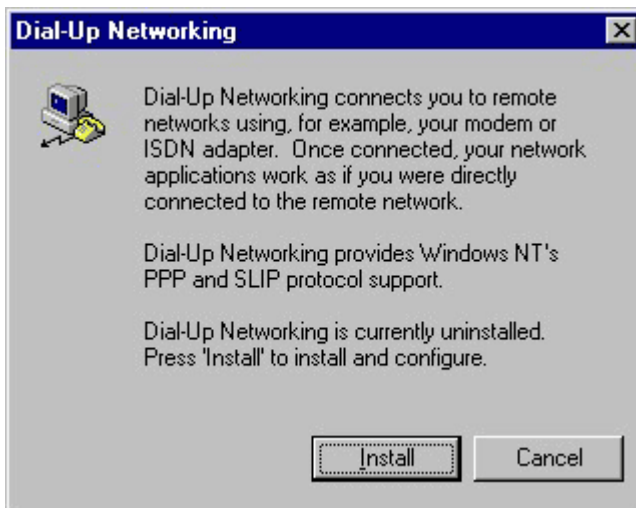


## Dialup setup: Windows NT4

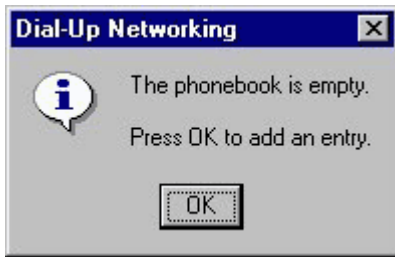
1. On the desktop, double-click on the **My Computer** icon.
2. Double-click on the **Dial-up Networking** icon.



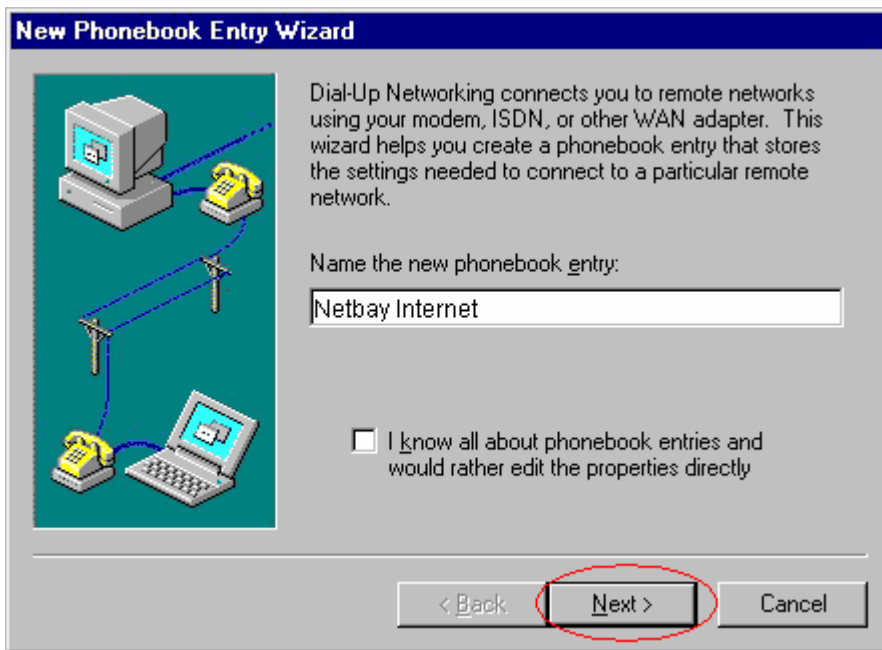
3. If you have not installed it before, you will be presented with the window with **Install** button. Click **Install**, to install Dial-up Networking onto your PC.



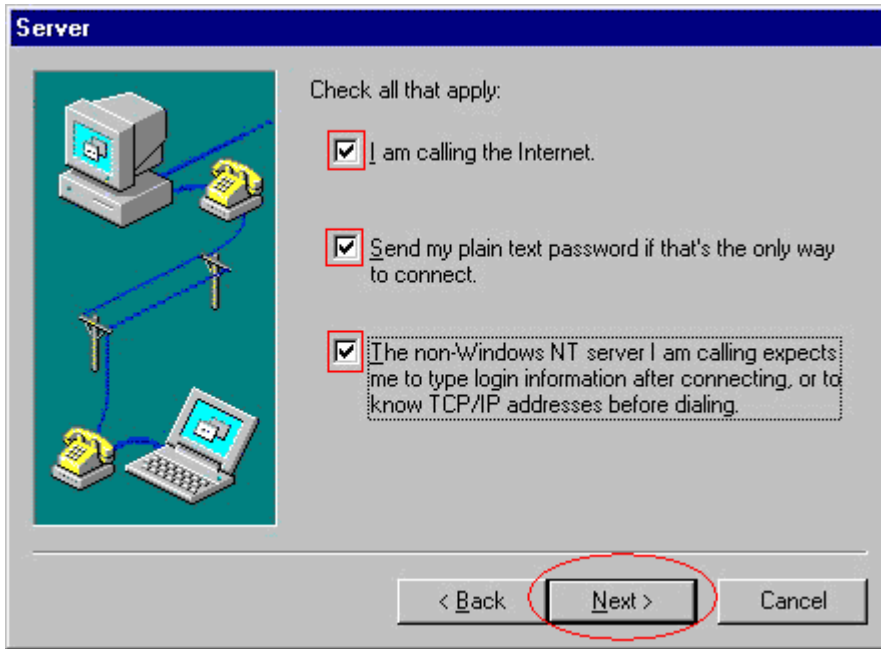
4. After Dial-up Networking is installed, you will be presented with a warning that the phone book is empty, click **OK** to add an entry.



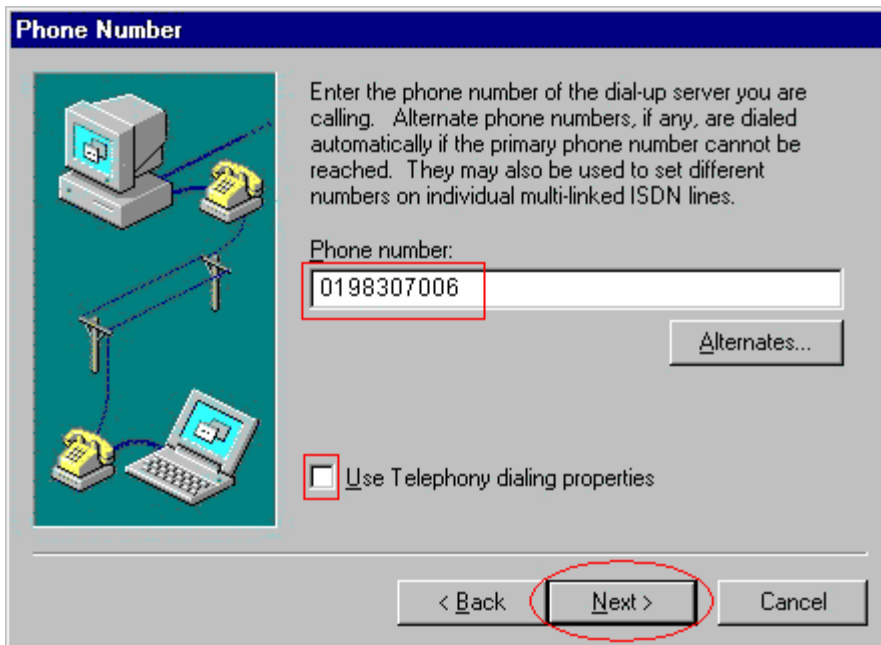
5. Enter **Netbay Internet** in the **Name the new phonebook entry** box, click **Next**.



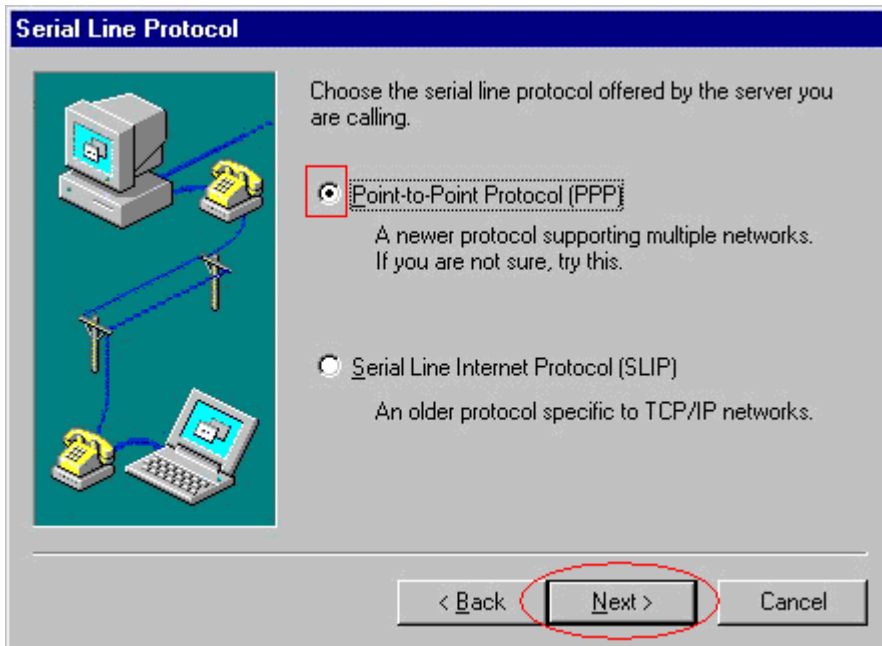
6. Tick all the three check boxes, click **Next**.



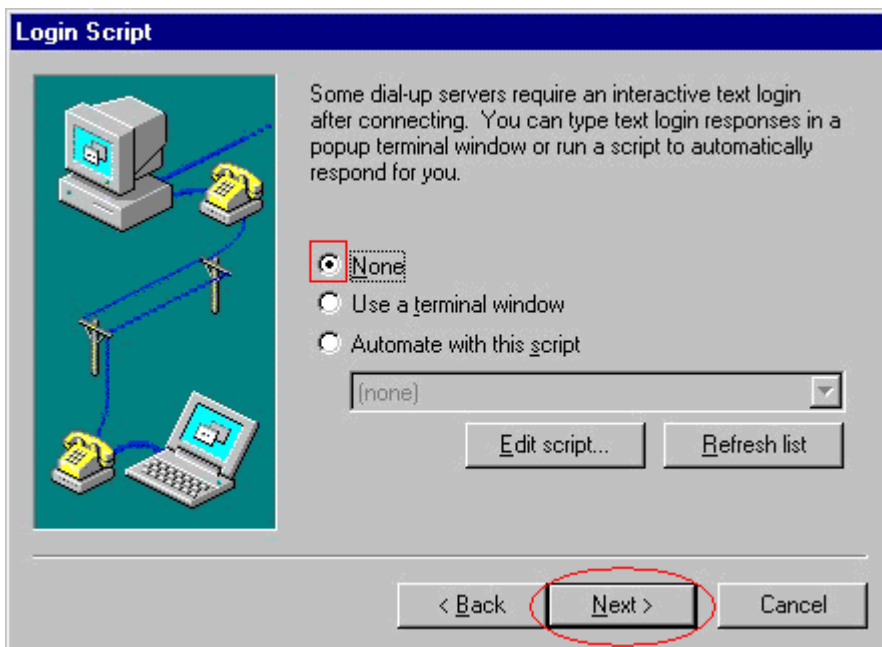
7. Enter **0198307006** as shown below, make sure the box beside **Use Telephony dialing properties** is unticked; click **Next** when done.



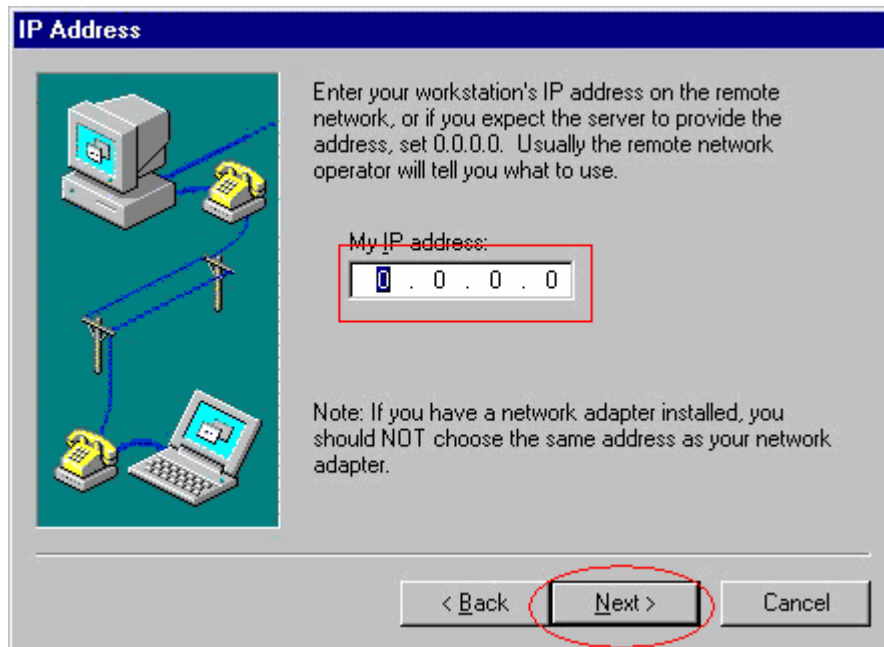
- Click on the radio button beside **Pont-to-Point Protocol (PPP)** radio button, click **Next**.



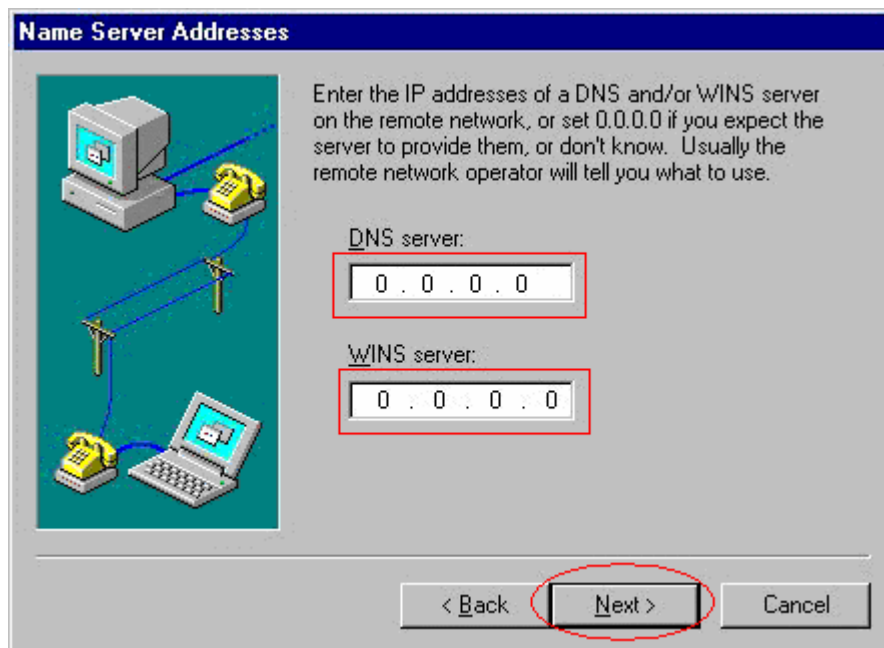
- Click on the radio button beside **None**, click **Next**.



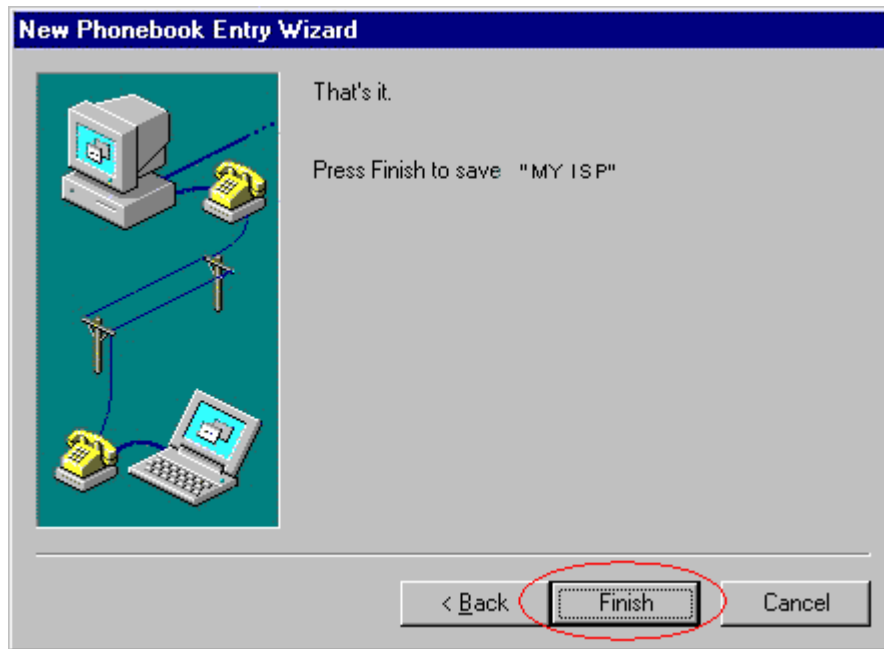
10. Enter 0.0.0.0 in the **My IP address** as shown below, click **Next**.



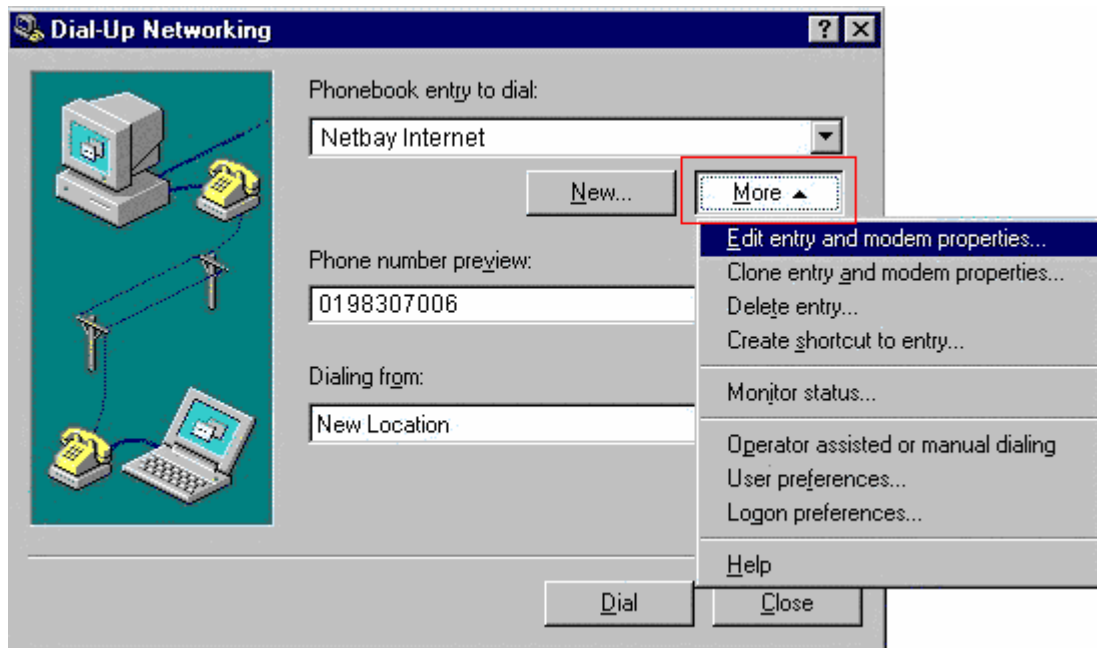
11. Enter 0.0.0.0 in the **DNS server** and **WINS server** as shown below, click **Next**.



12. Click **Finish**.

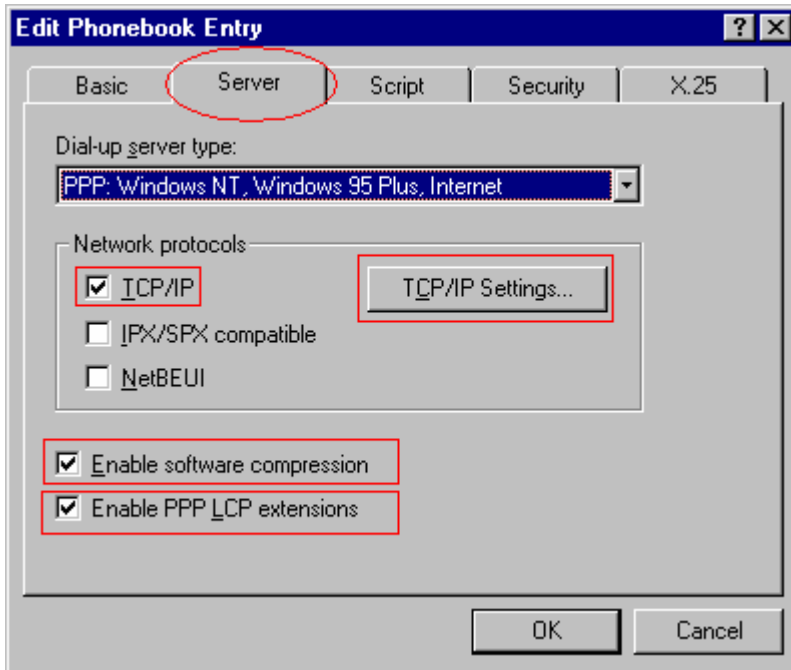


13. Click **MORE** and select **Edit edit entry and modem properties**.



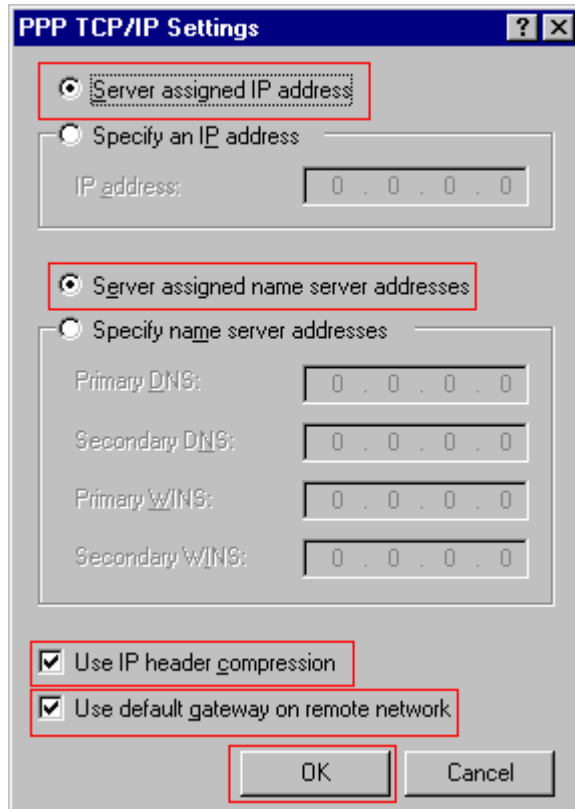
14. Click **Server** tab, tick the boxes beside **TCP/IP**, **Enable software compression** and **Enable PPP LCP extensions**.

Click **TCP/IP settings** when done.

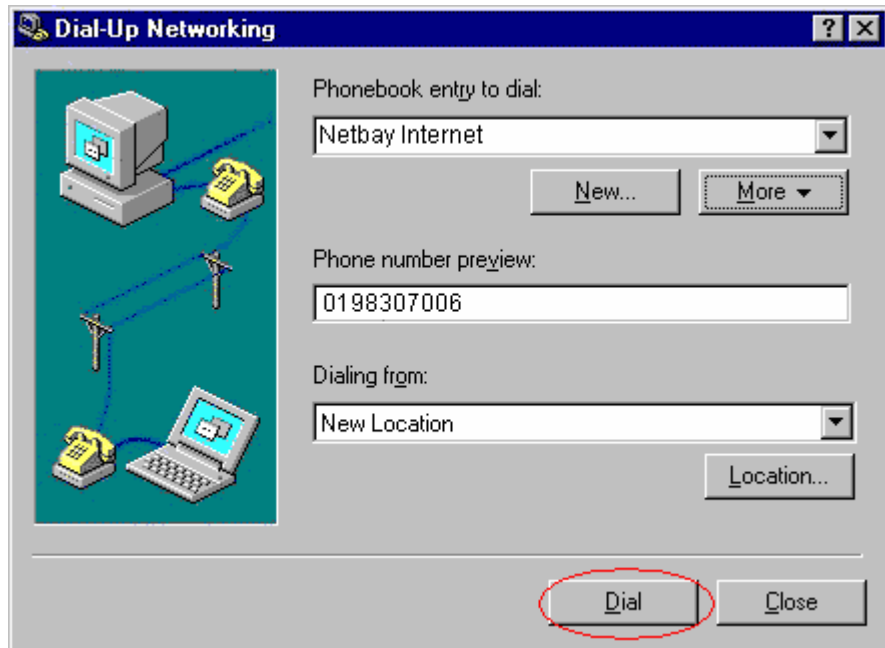


15. Click on the radio button beside **Server assigned IP address** and **Server assigned name server addresses**. Tick the box beside **Use IP header compression** and **Use default gateway on remote network**.

Click **OK** when done.



16. Click the **OK** button until you are back to the screen where it says **Dial** at the bottom of the window, and click **Dial**.



17. Enter your Netbay Account username and password as shown below. Leave the **Domain** box blank, and click **OK**.

**Note:** Do not include @netbay.com.au at the end.

