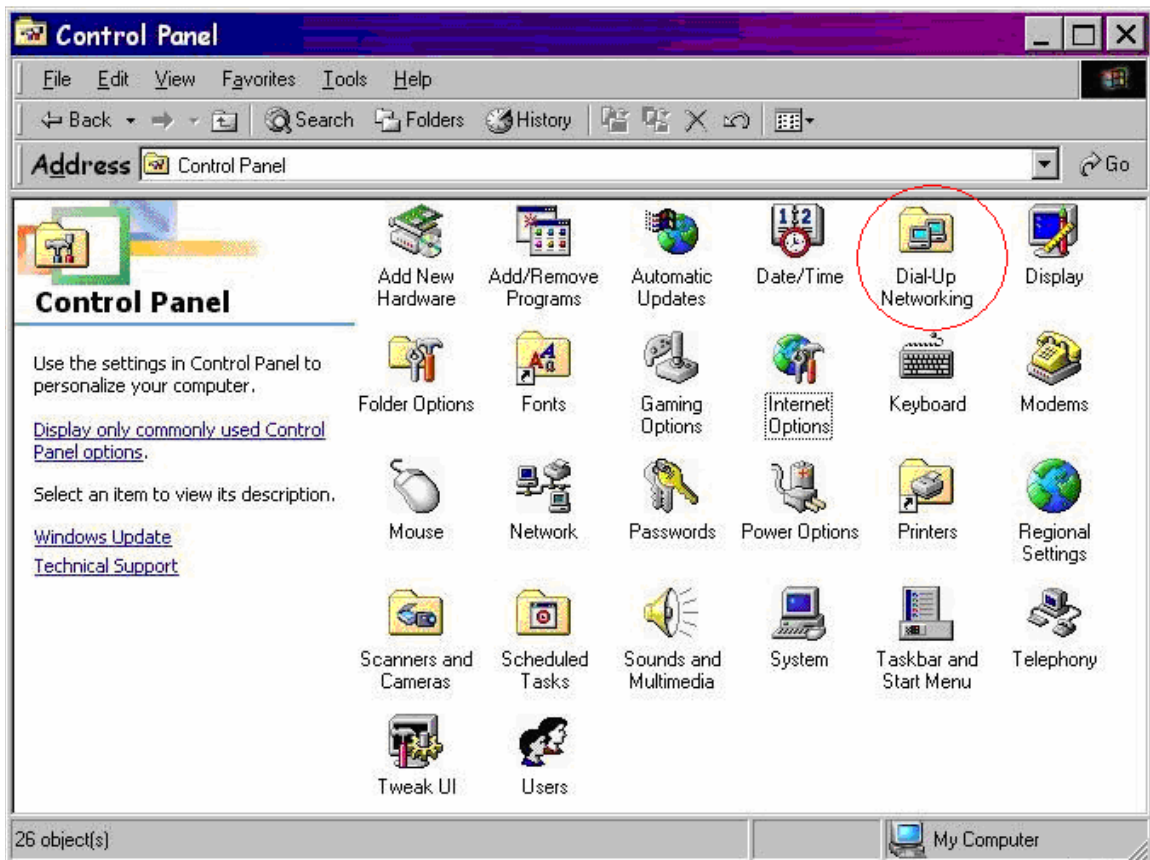


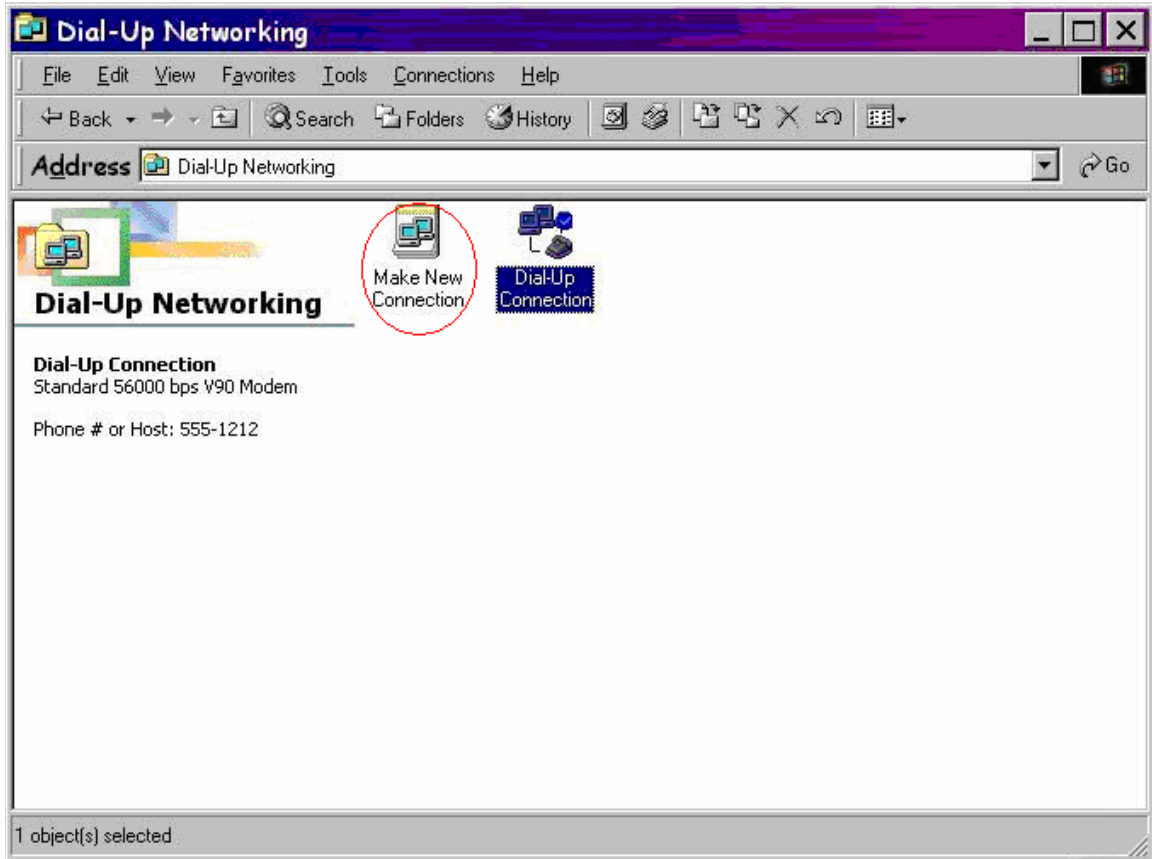


## Dialup setup: Windows ME

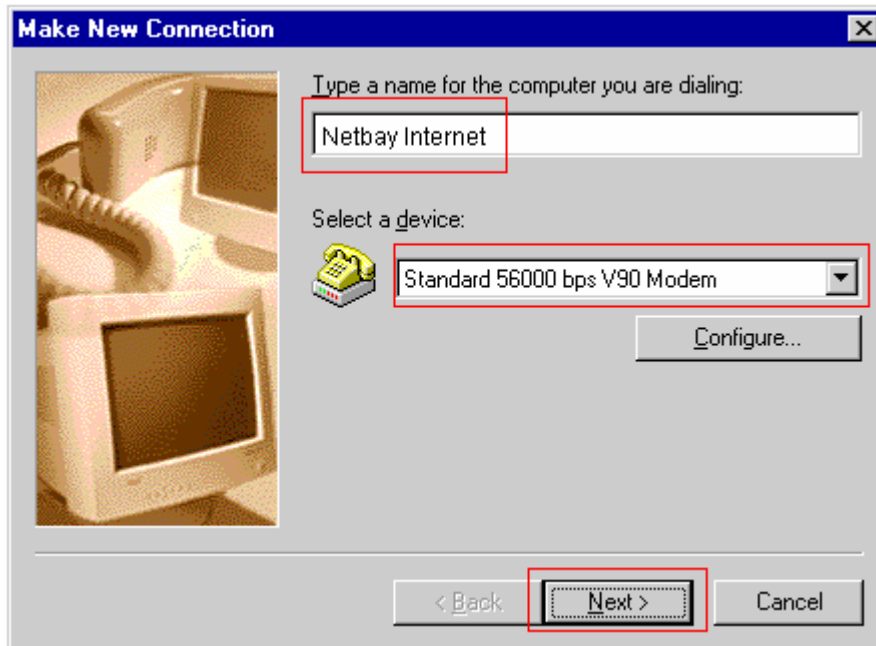
1. On the desktop, double-click the **My Computer** icon.
2. Double-click on the **Control Panel** icon.
3. Double-click on the **Dial-up Networking** icon.



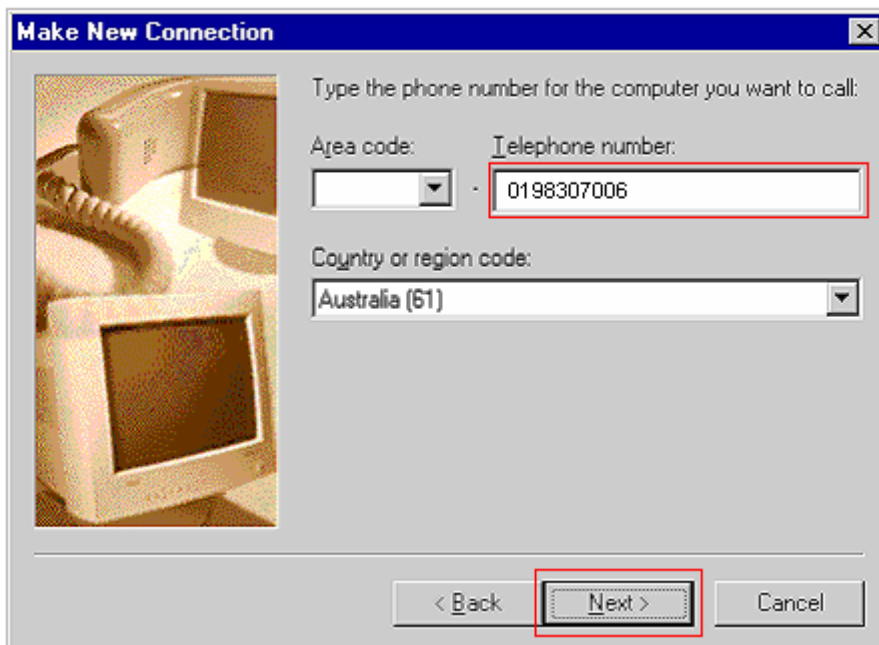
4. Delete any existing unusable **Connection** icons (preferred).
5. Double-click on the **Make New Connection** icon.



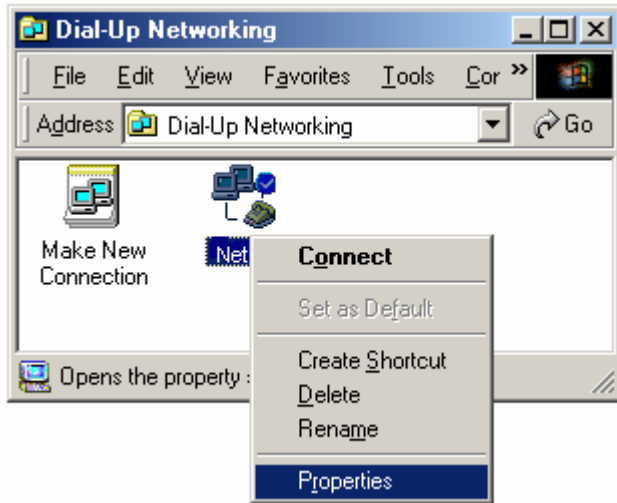
6. Enter **Netbay Internet** as shown below. Select the appropriate modem from the **Select a device** drop down list, and click **Next**.



7. Enter **0198307006** as shown below, click **Next** and click **Finish**.

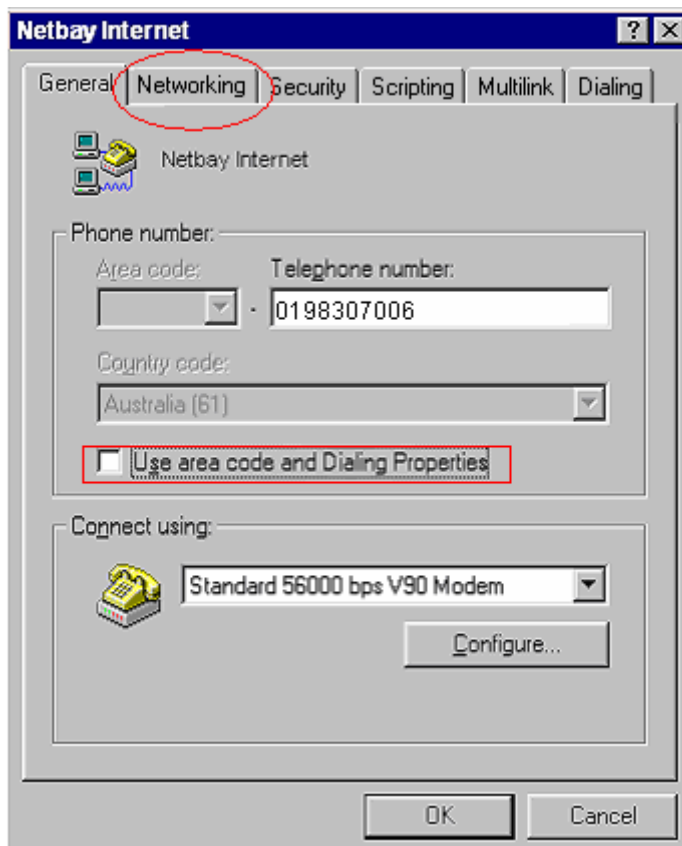


8. In the **Dial-Up Networking** window, right-click on the **Netbay Internet** icon and select **Properties**.



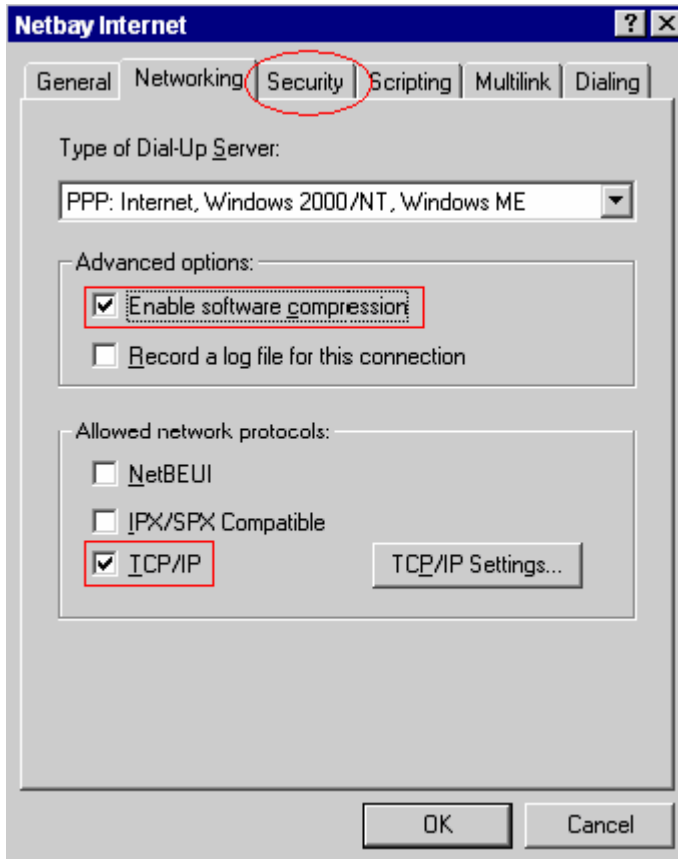
10. Untick the box beside **Use area code and Dialing Properties**.

Click on the **Networking** tab when done.



9. Tick the box beside **Enable software compression**, **TCP/IP** and Make sure all other check boxes have **NO** ticks as shown below.

Click on the **Security** tab when done.



10. Enter your Netbay account username and password, leave the **Domain** text box blank and make sure all other check boxes have **NO** ticks as shown below.

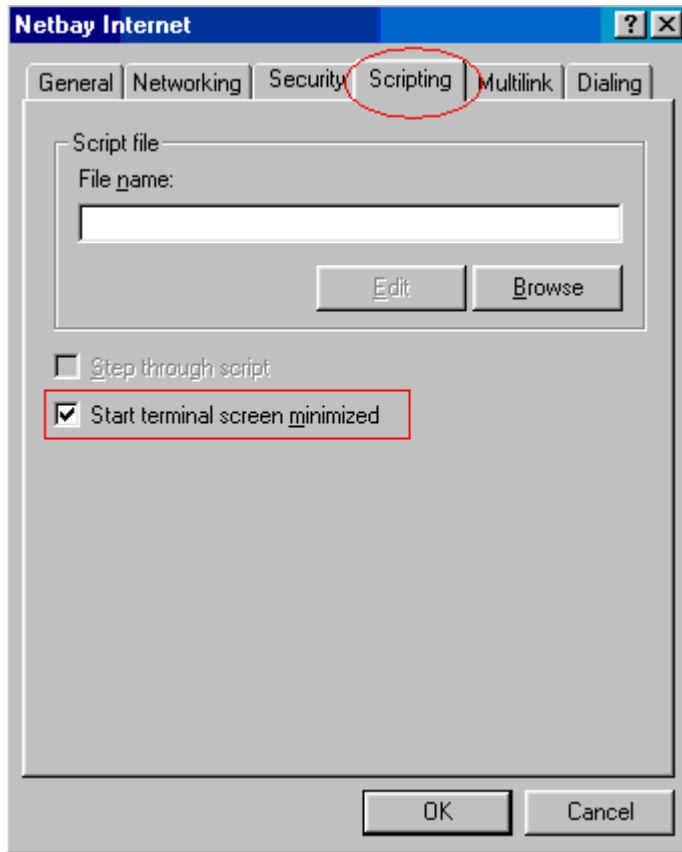
**Note:** Please DO NOT include @netbay.com.au at the end.

Click on the **Scripting** tab when done.

The screenshot shows the 'Netbay Internet' dialup setup window with the 'Scripting' tab selected. The 'Authentication' section contains three text boxes: 'User name' with 'username', 'Password' with '\*\*\*\*\*', and 'Domain' which is empty. Below these is a checkbox for 'Connect automatically' which is unchecked. The 'Advanced security options' section contains three checkboxes: 'Log on to network', 'Require encrypted password', and 'Require data encryption', all of which are unchecked. The 'Scripting' tab is circled in red, and the three text boxes in the authentication section are also circled in red. The window has 'OK' and 'Cancel' buttons at the bottom.

11. Tick the box beside **Start terminal screen minimized**.

Click on the **Multilink** tab when done.



12. Click on the radio button beside **Do not use additional devices.**

Click on **OK** when done.

