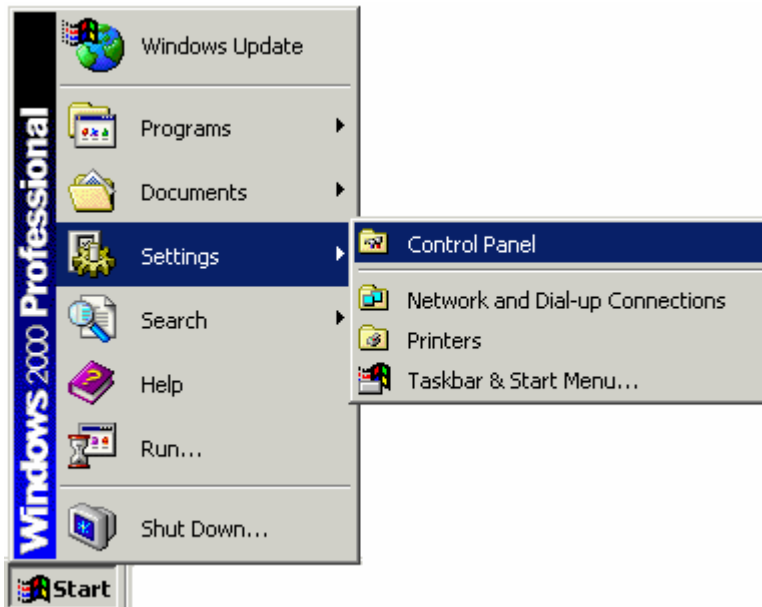


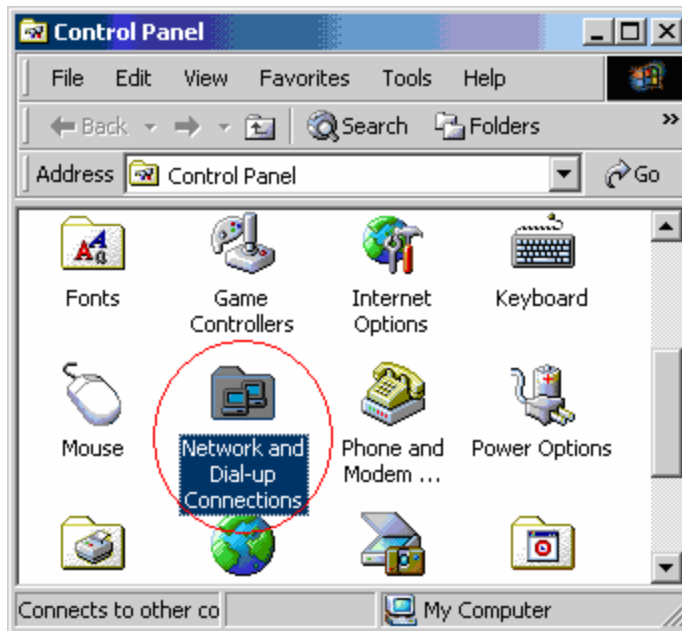


Dialup setup: Windows 2000

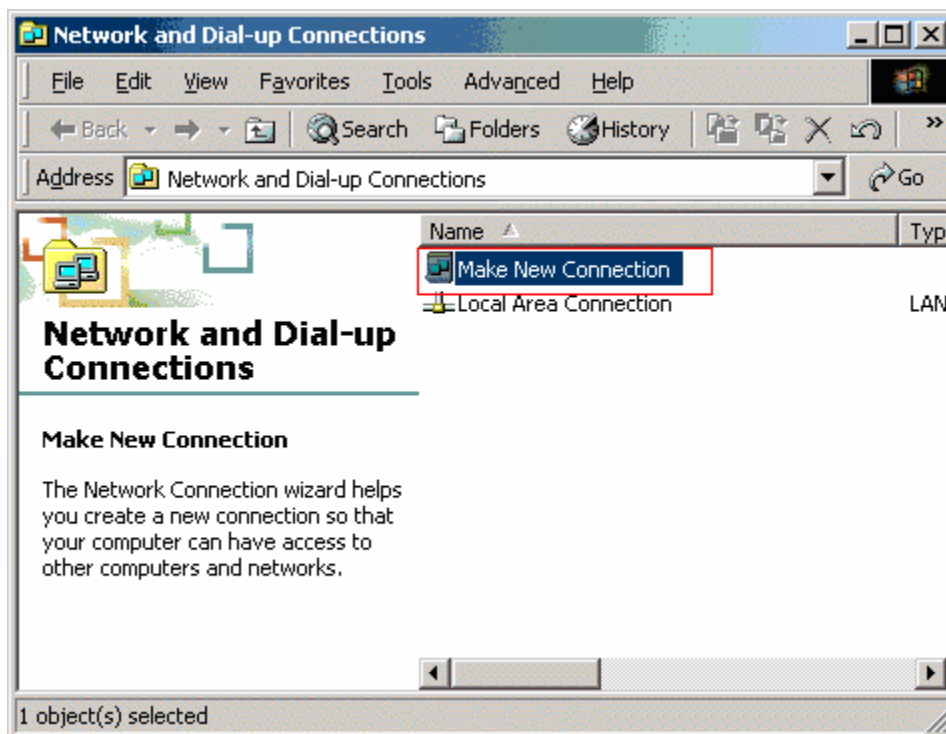
1. On the desktop, Click on **Start**, Click **Settings**, then Choose **Control Panel**.



2. Double-click on the **Network and Dial-up Connections** icon.



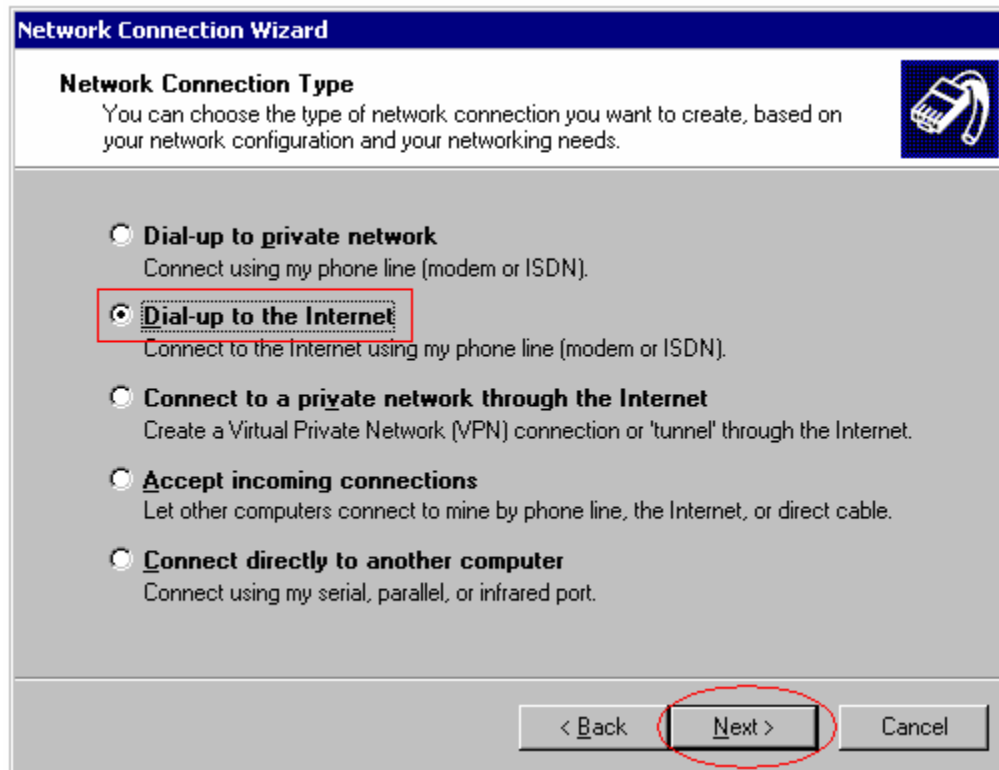
3. Double-click on the **Make New Connection** icon.



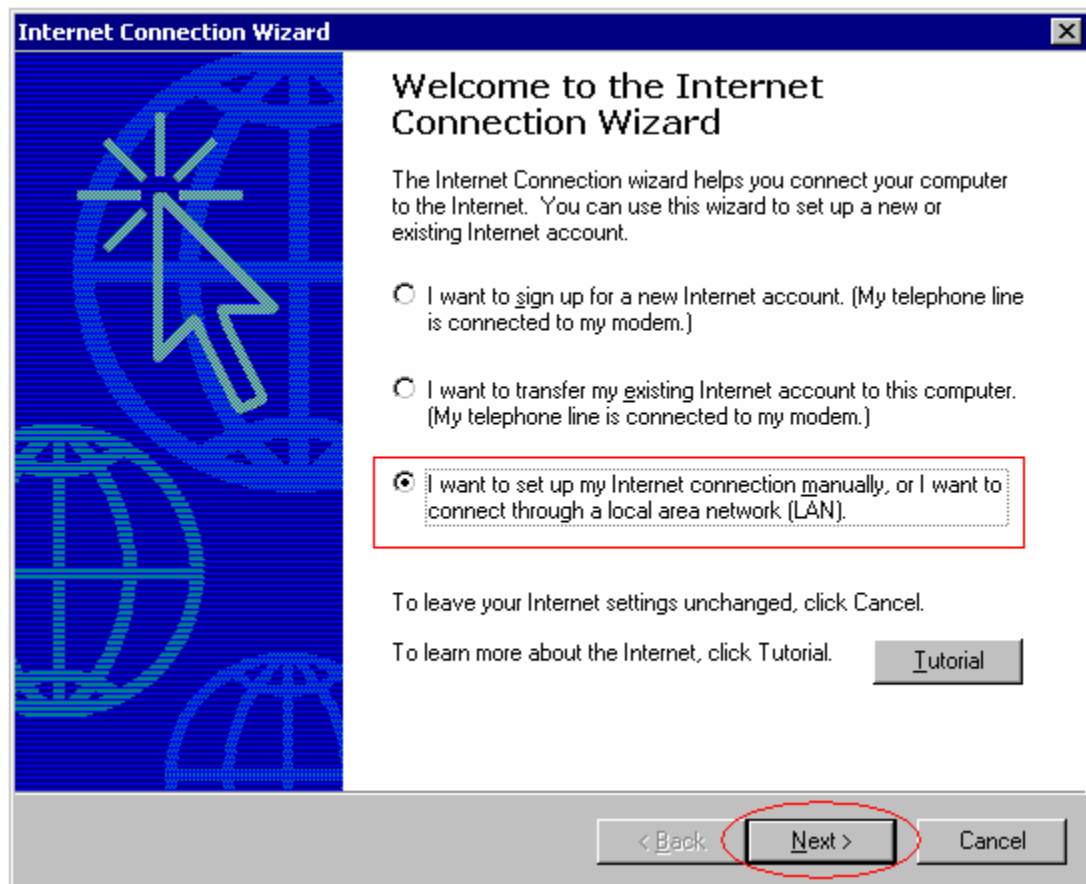
4. Click **Next**.



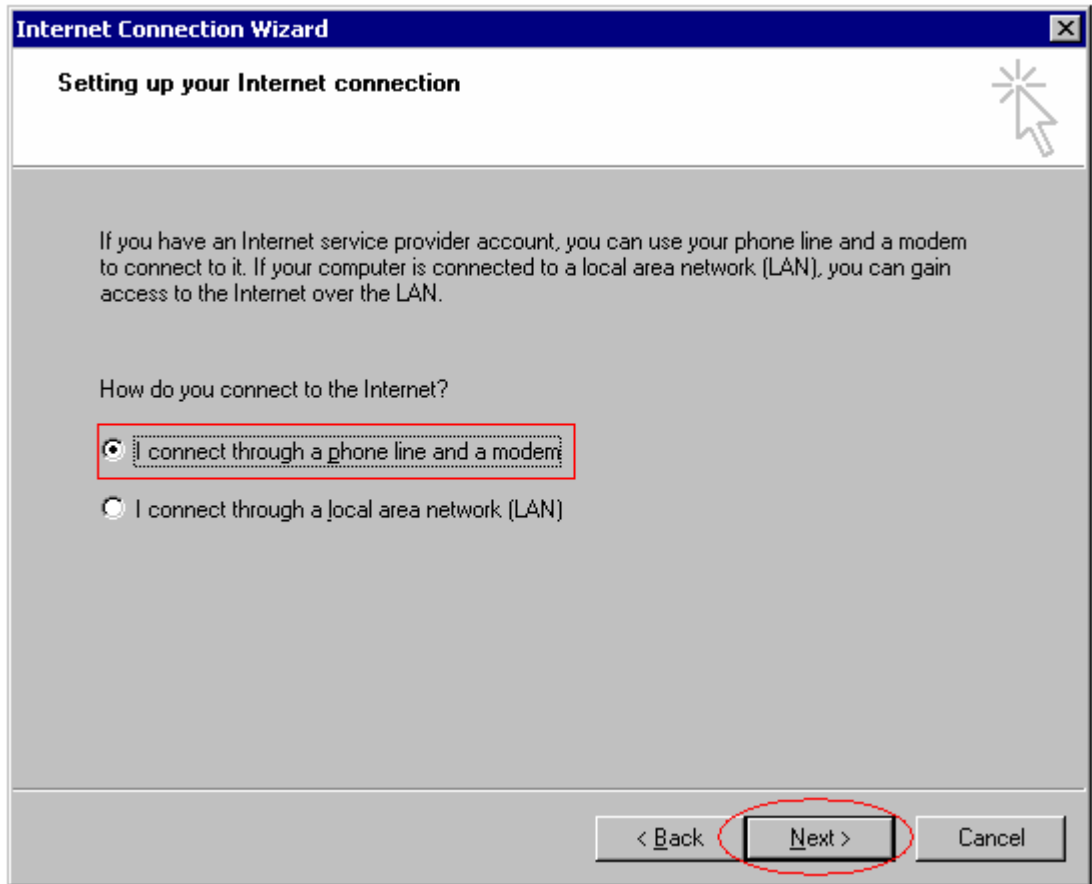
5. Click on the radio button beside **Dial-up to the Internet**, click **Next**.



6. Click on the radio button beside **I want to set up my Internet connection manually**, click **Next**.



7. Click on the radio button beside **I connect through a phone line and a modem** radio button, click **Next**.



8. Enter **0198307006** as shown below, untick **Use area code and dialing rules** and click **Next**.

Internet Connection Wizard

Step 1 of 3: Internet account connection information

Type the phone number you dial to connect to your ISP.

Area code: Telephone number:

Country/region name and code:

Use area code and dialing rules

To configure connection properties, click Advanced.
(Most ISPs do not require advanced settings.)

9. Enter your Netbay account username and password as shown below.

Note: DO NOT include @netbay.com.au at the end.

Click **Next** when done.

Internet Connection Wizard

Step 2 of 3: Internet account logon information

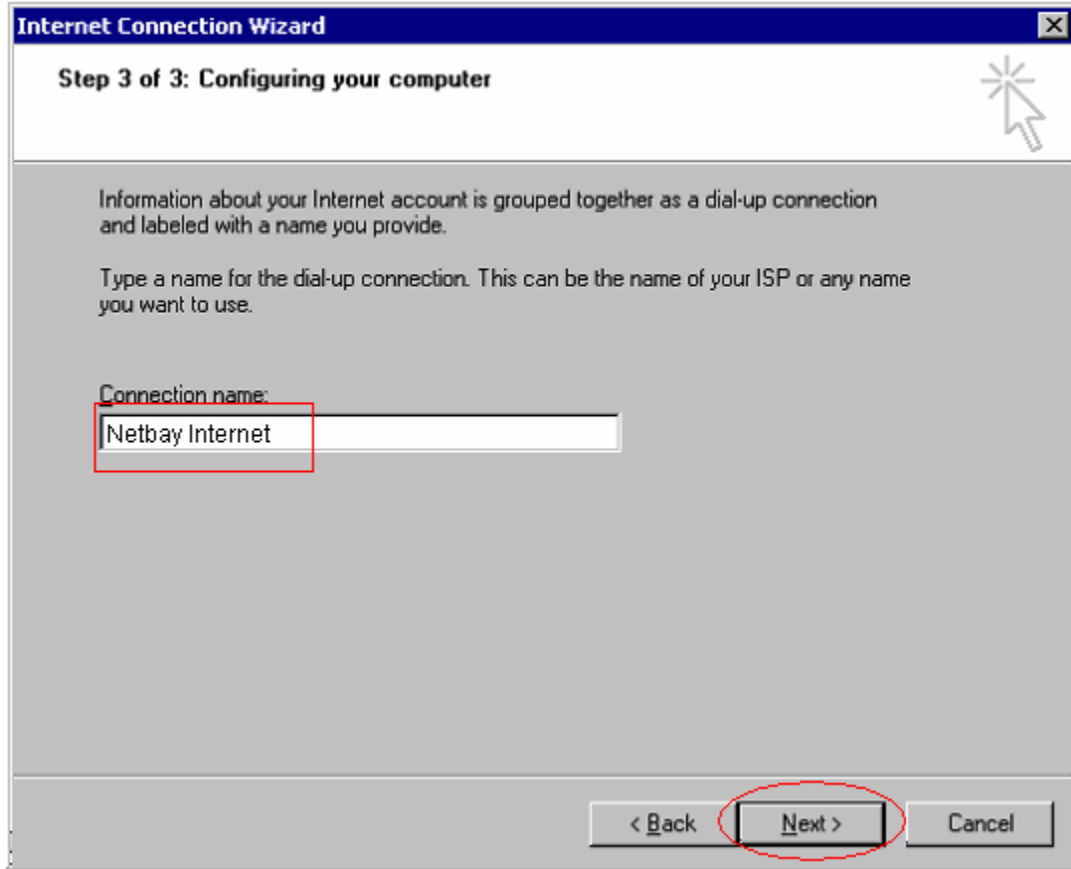
Type the user name and password you use to log on to your ISP. Your user name may also be referred to as your Member ID or User ID. If you do not know this information, contact your ISP.

User name:

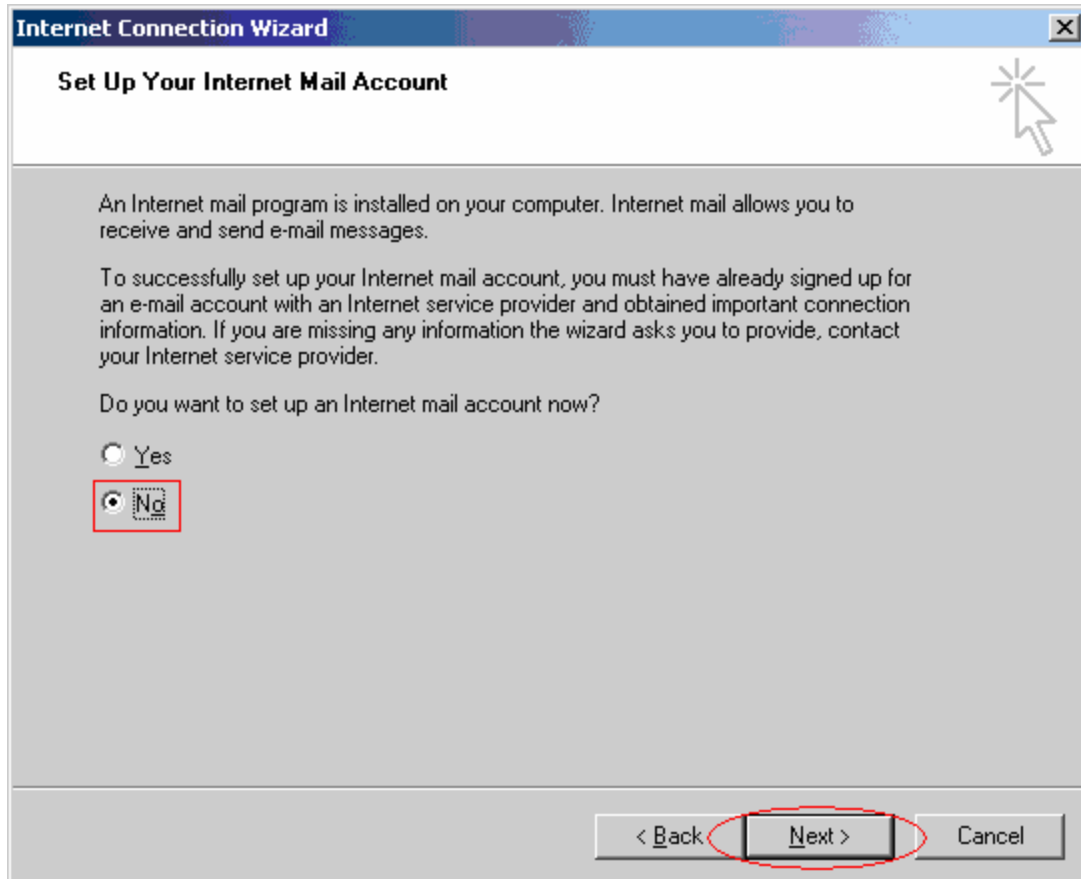
Password:

< Back **Next >** Cancel

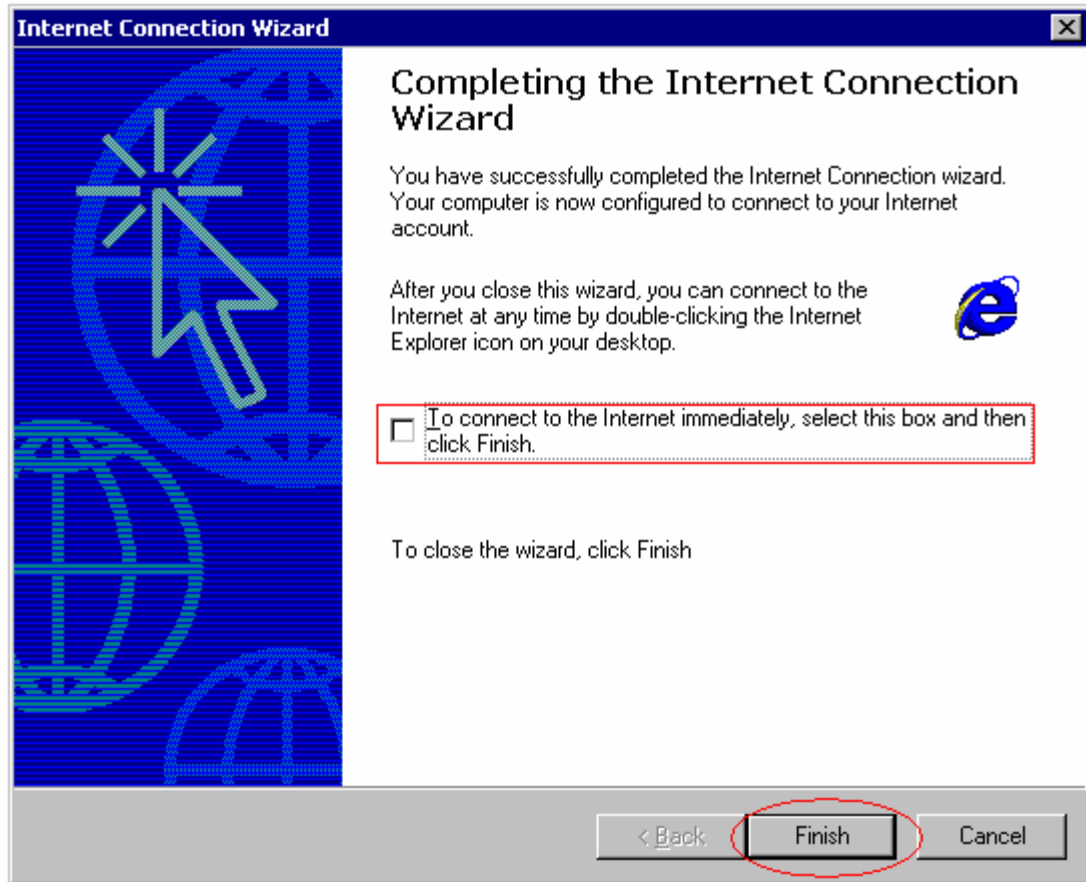
10. Enter **Netbay Internet**, click **Next**.



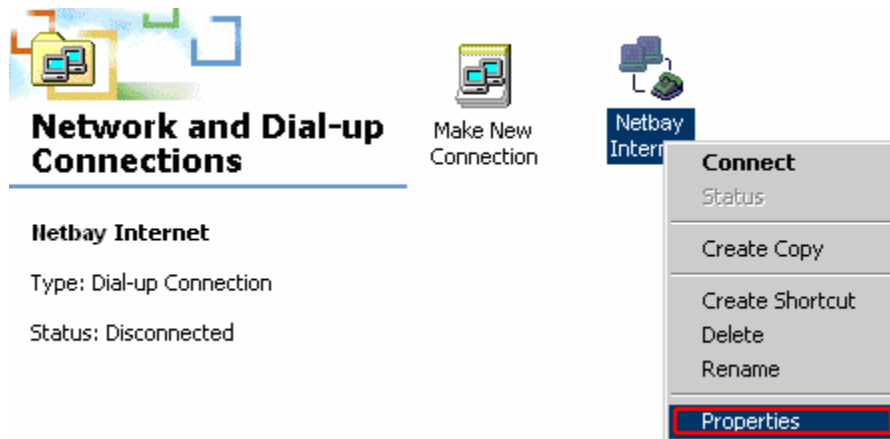
11. Click on the radio button beside **No**, click **Next**.



12. Untick the box beside **To connect to the Internet immediately** and click **Finish**.

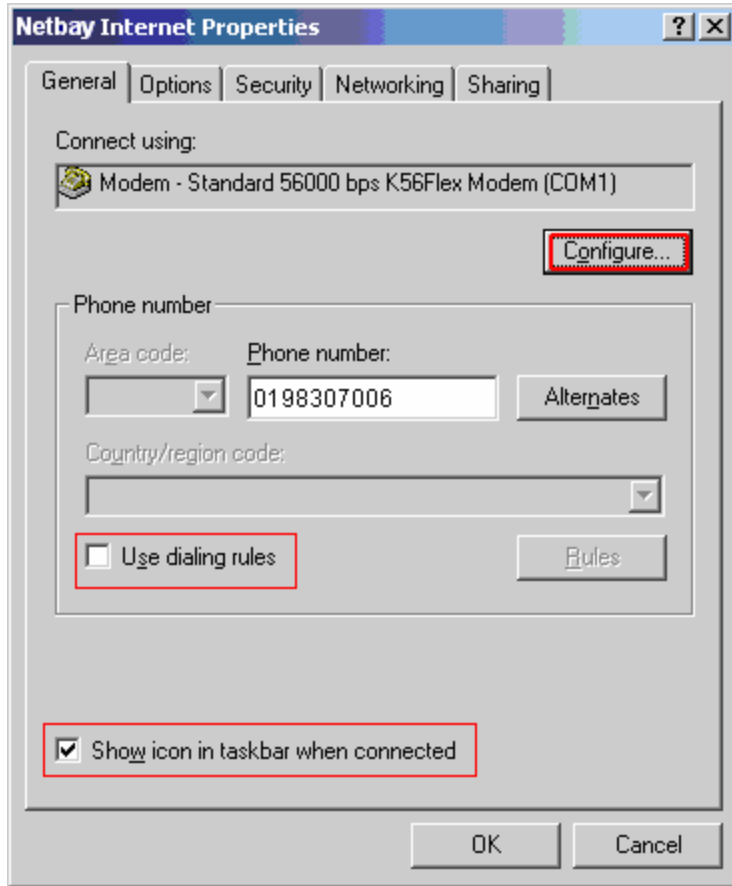


13. Right-click on the dial-up icon, and click **Properties**.



14. Untick the box beside **Use dialing rules**.
Tick the box beside **Show icon in taskbar when connected**.

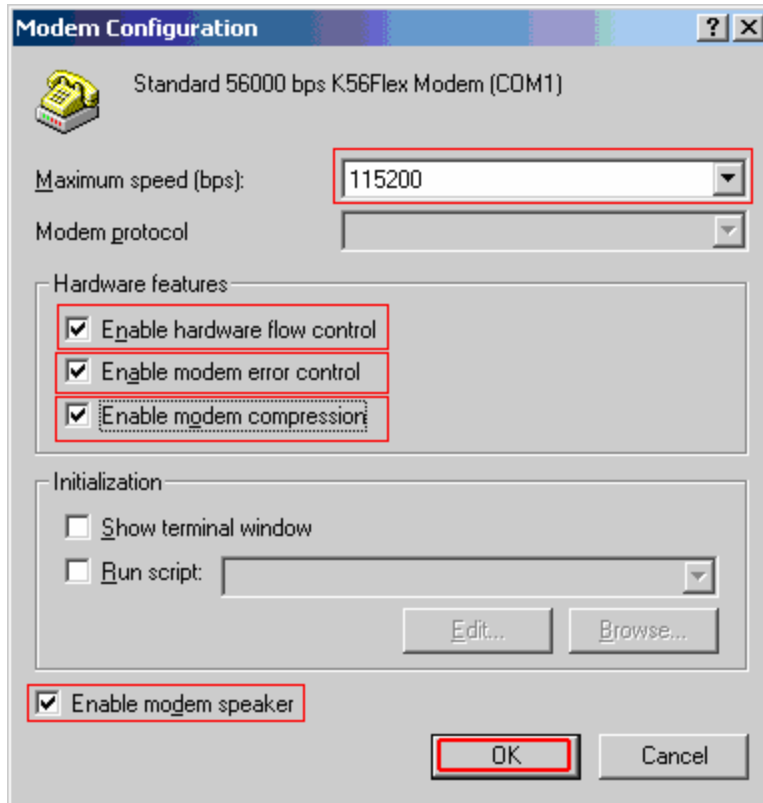
Click **Configure** when done.



15. Select **115200** in the dropdown box beside **Maximum speed (bps)**.

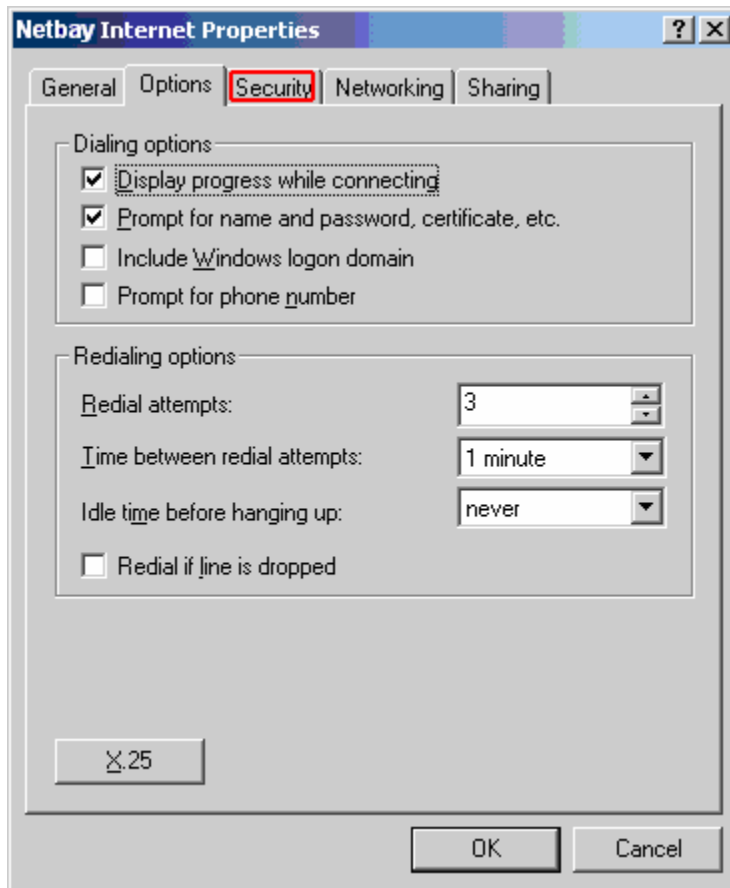
Tick boxes as shown below, and click OK.

Click on the **Options** tab.



16. Make sure the respective boxes are ticked/unticked as shown below.

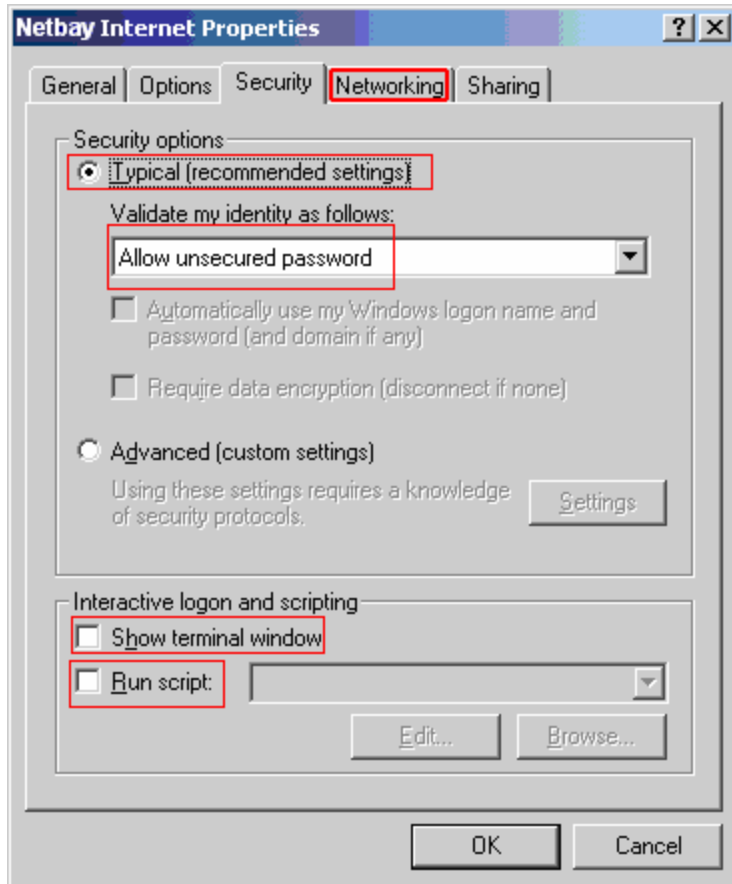
Click on the **Security** tab when done.



17. Select **Typical**, and make sure **Allow unsecured password** is selected.

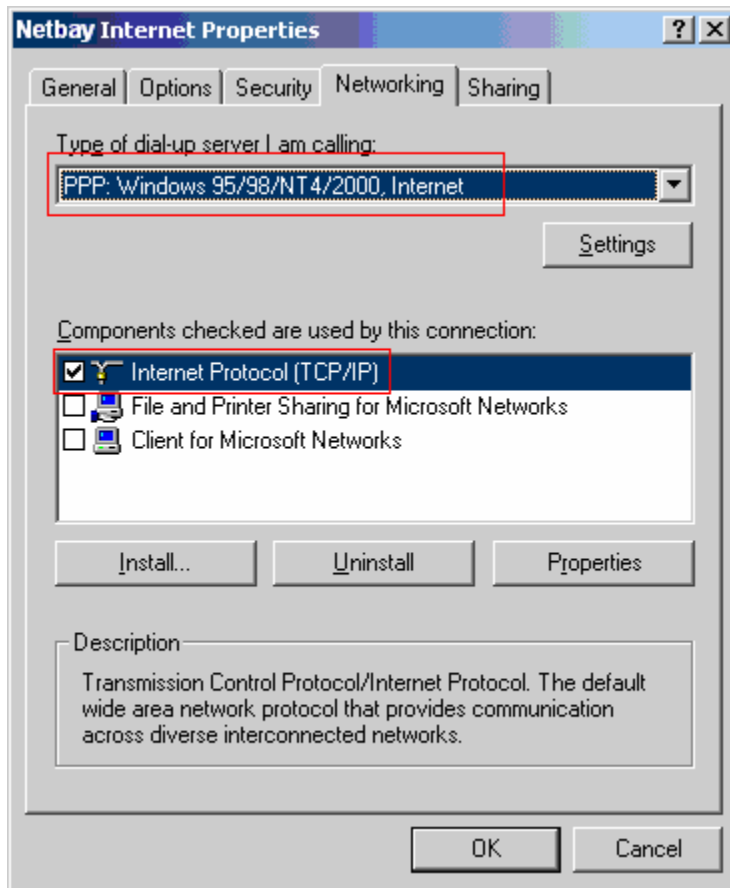
Untick **Show terminal window** and **Run script**.

Click on the **Networking** tab when done.



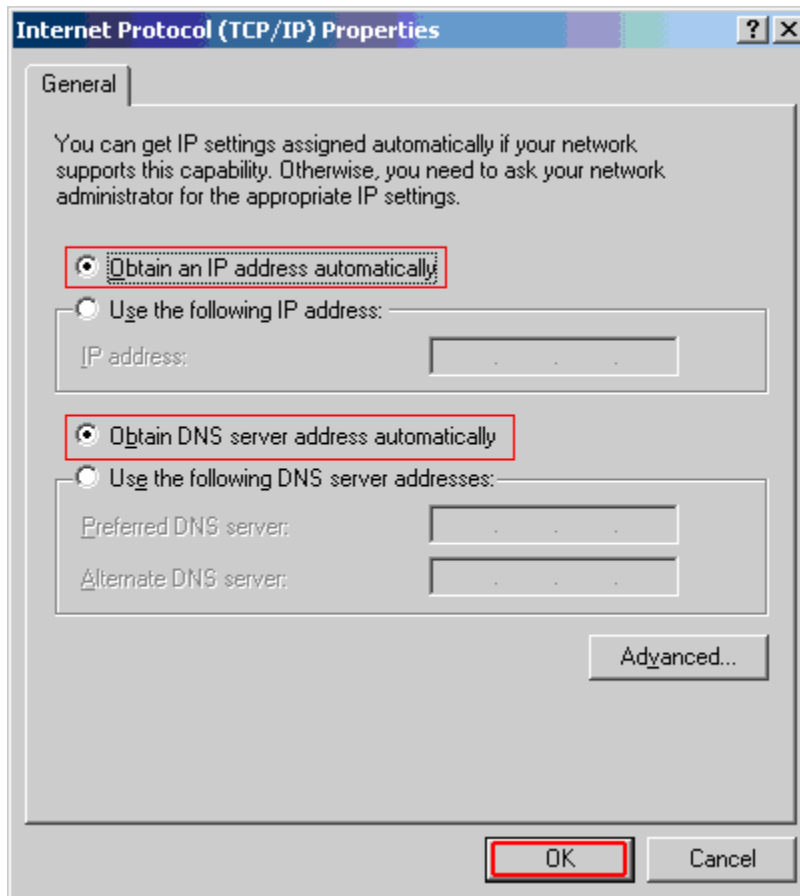
18. Make sure **PPP: Windows 95/98/NT4/2000, Internet** is selected.

Double click on **Internet Protocol (TCP/IP)** when done.

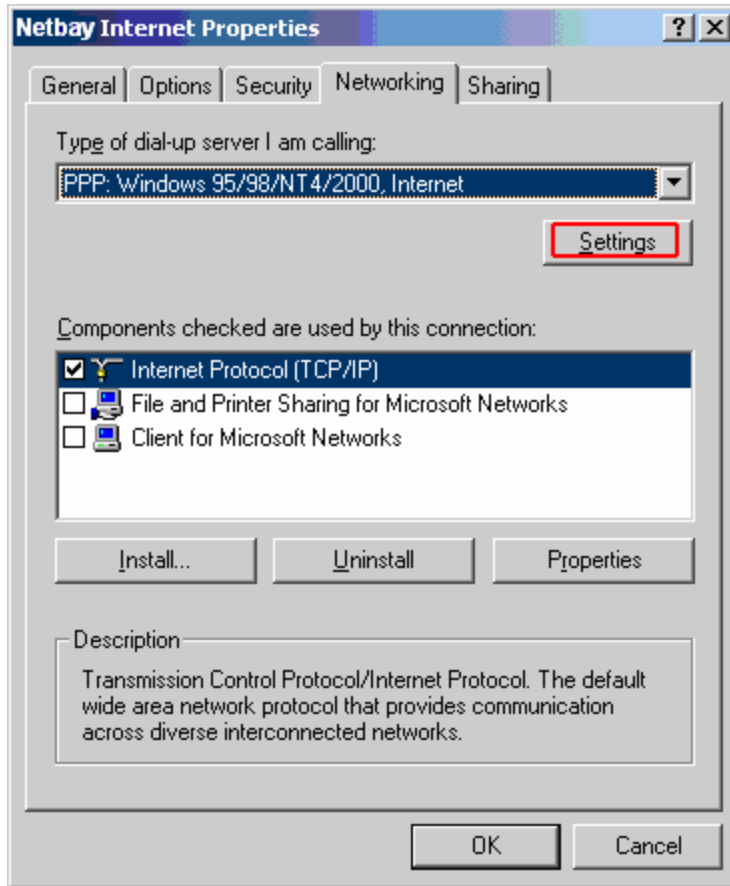


19. Make sure the settings in this window are similar to the screen capture below.

Click **OK** when done.



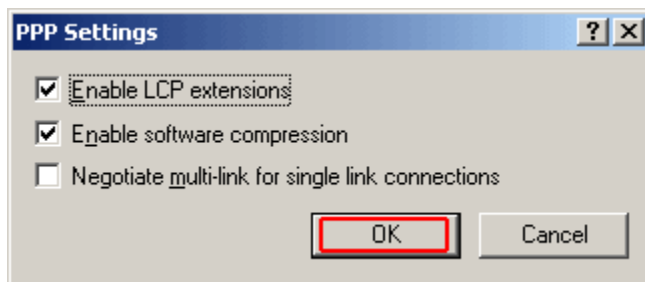
20. Then click the **Settings** button.



21. Tick **Enable LCP extensions** and **Enable software compression**.

Untick **Negotiate multi-link for single link connections**.

Click **OK** when done, then click on the **Sharing** tab next.



22. Optional setting: follow the settings display on the below screen capture.

Note that applying the below settings will change the way other computers are able to access your computer. We recommend that you leave the default settings unchanged.

Click on **OK** when done.

